

Maintaining Grain Quality in Storage

Klein Ileleji, PhD.

Associate Professor & Extension Engineer
Agricultural and Biological Engineering

Post-Harvest Update and Recertification Workshop

December 16, 2013

Beck Ag. Center, West Lafayette, Indiana

Grain Post-Harvest Team



Presentation Outline

- 2013 Corn and Soybean Quality Brief
- Emerging Issues
- Basics of Stored Grain Management
- Application of S.L.A.M.

2013 Corn & Soybean Quality

- Overall it was a good year for both crops
- Crop harvested timely came out of field with good storage characteristics
- Crops harvested late in November where hit by frost and rewetting which created field variability in moisture and difficult drying conditions

Emerging Issues

- Increased cases of bin entrapment/engulfment
- Increased on-farm storage capacity
- Managing grain quality in a bad year
- High levels of CO₂ emitted from wet corn in 2013
- Effective and safe monitoring of stored grain in silos and grain piles

Entrapments on the rise

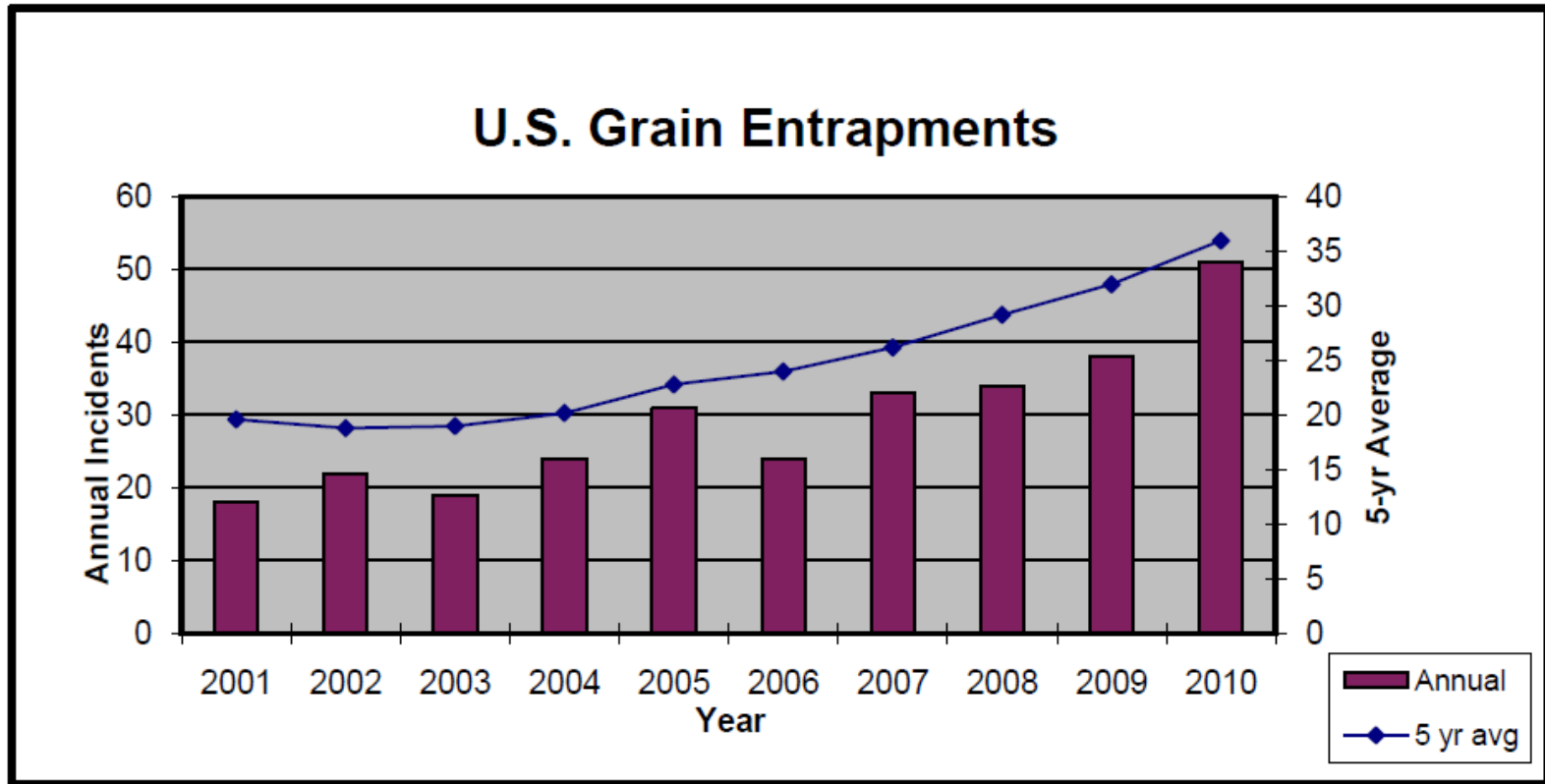
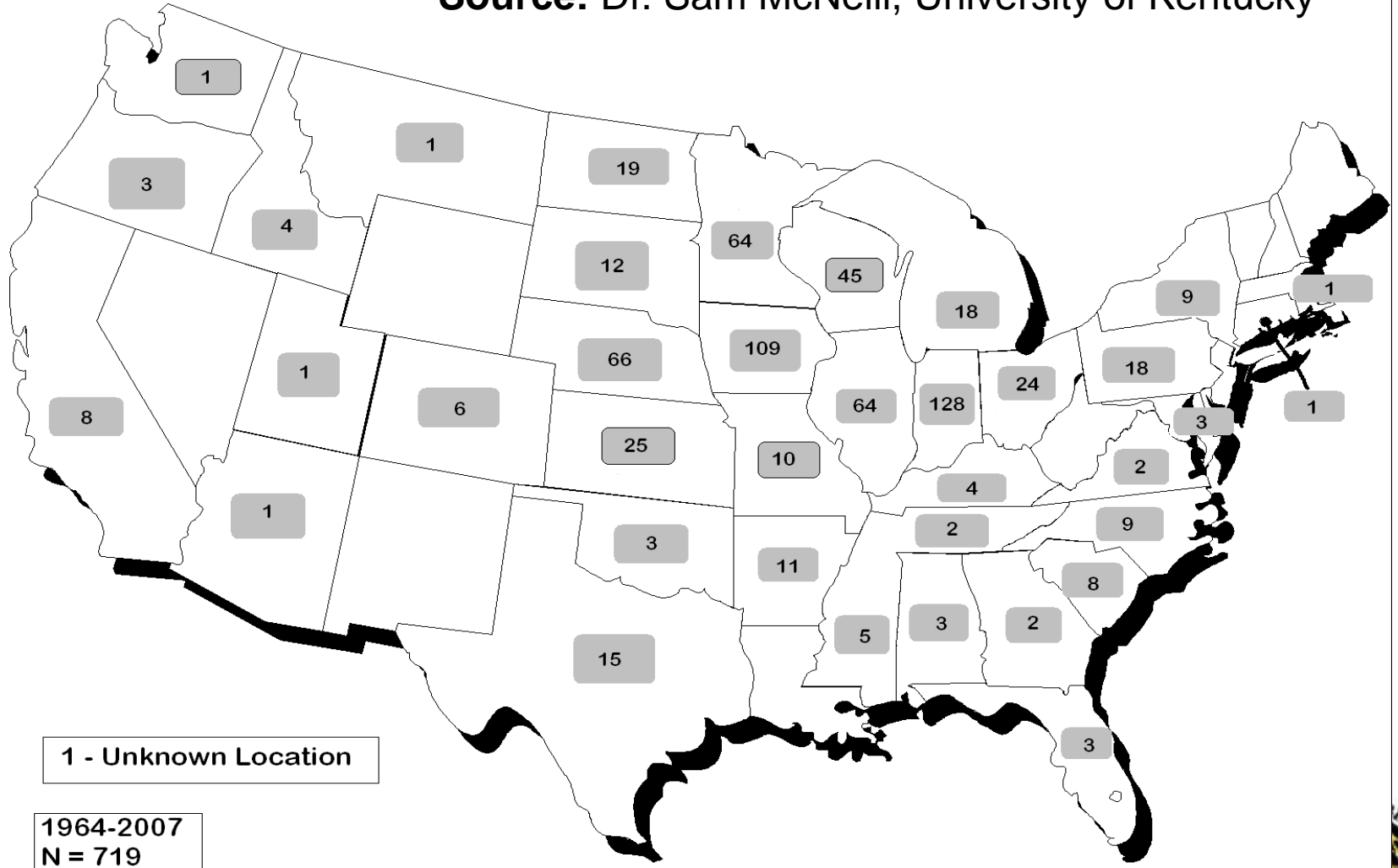


Figure 1: Number of annual grain entrapments³ recorded in the National Grain Entrapment Database and the 5-year average between 2001 and 2010.

Source: Riedel, S and W. Field. 2010. 2010 summary of grain entrapments in the United States. February 9, 2011.

Entrapments by Geographic Location

Source: Dr. Sam McNeill, University of Kentucky

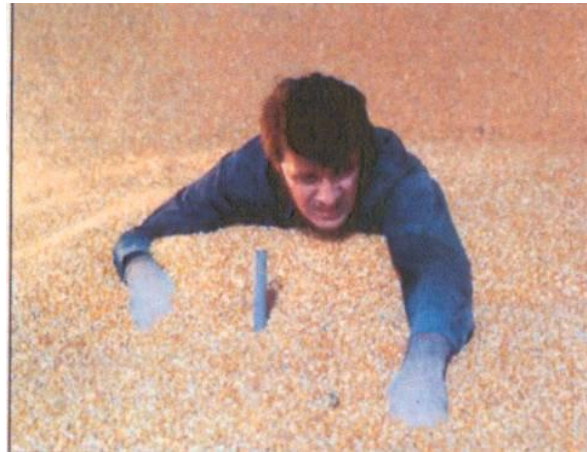


Documented Contributing Factors

- No. 1 identified cause of entrapment was out-of-condition grain
- High capacity grain handling systems
- Working alone
- Relaxed compliance with workplace safety regulations
- Lack of knowledge concerning the risk

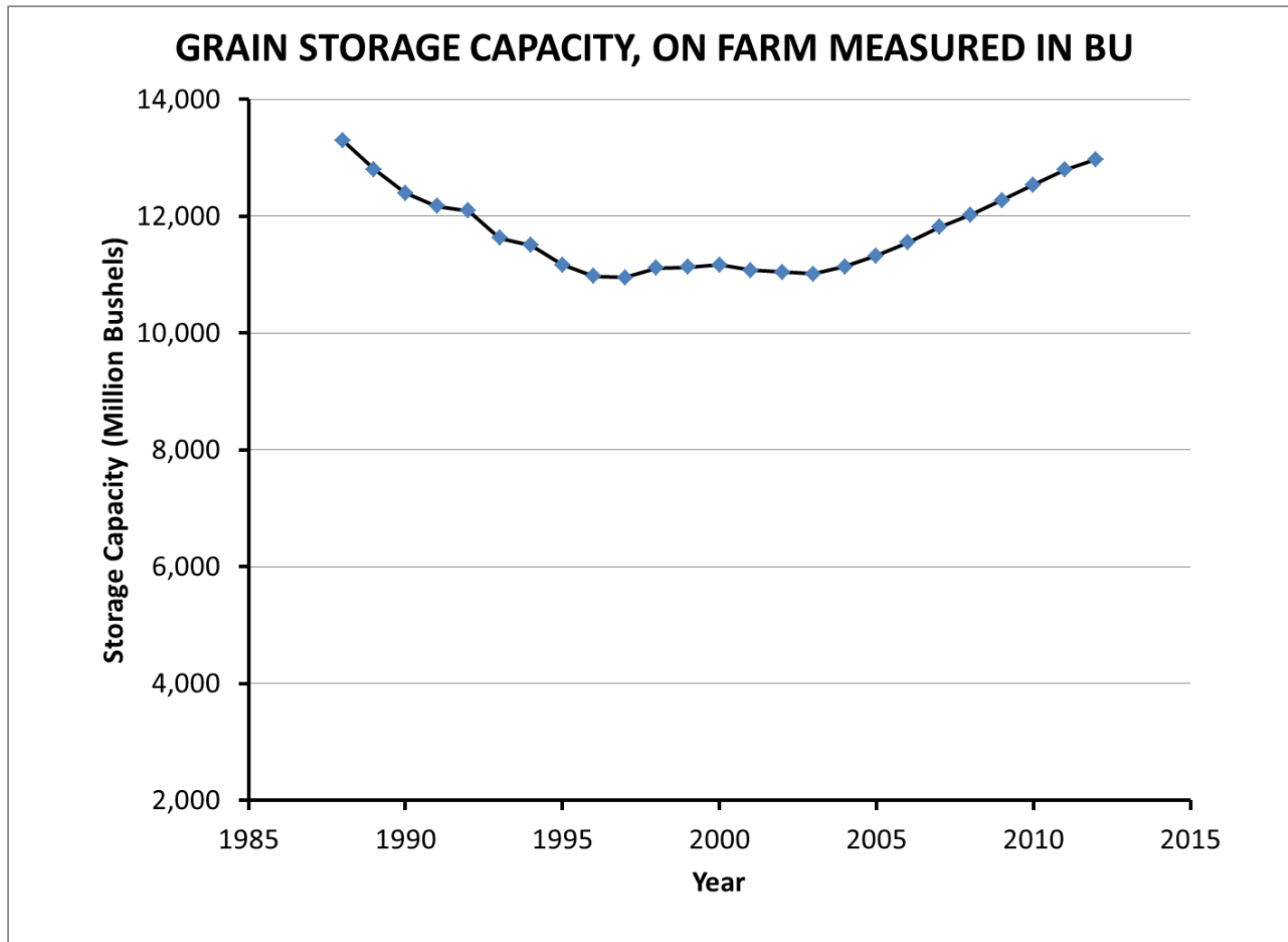
The Major cause of grain entrapments

- There continues to be a direct relationship between 'out-of-condition' or spoiled grain, and greater probability of entrapment (Riedel and Field, 2010)

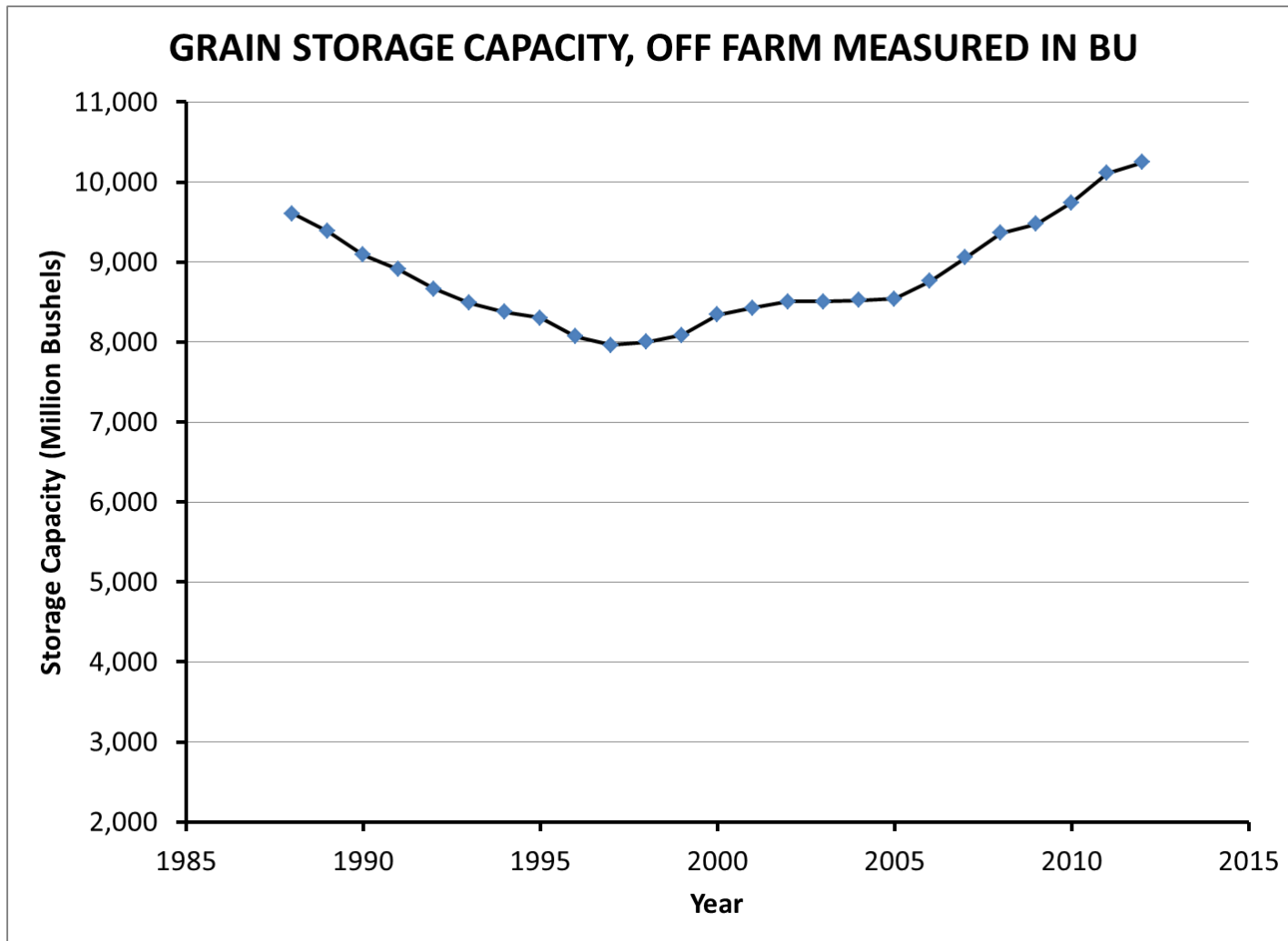


Source: Riedel, S and W. Field. 2010. 2010 summary of grain entrapments in the United States. February 9, 2011.

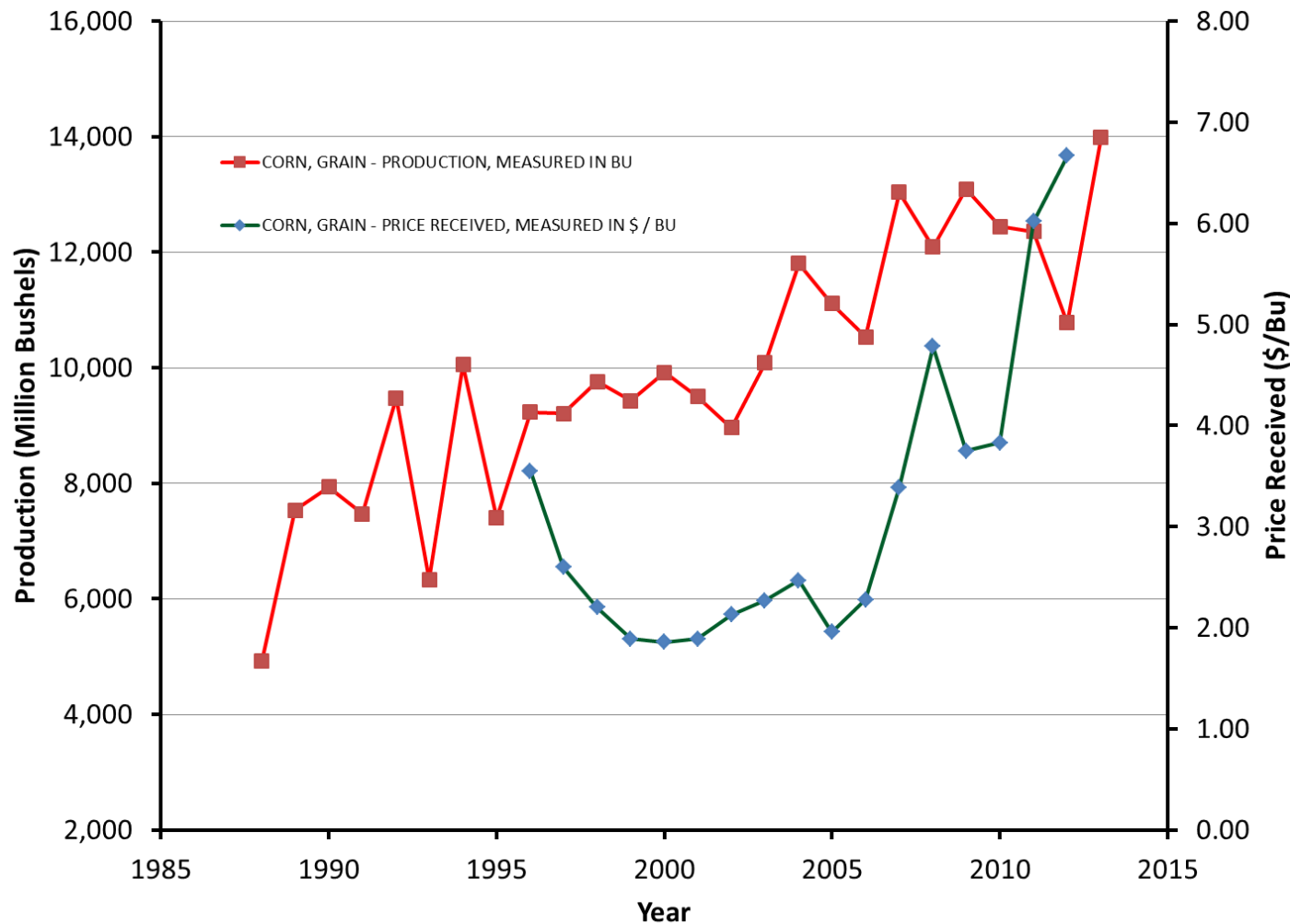
U.S. On-Farm Storage Capacity



U.S. Off-Farm Storage Capacity



U.S. Corn Production and Price



How do you manage quality in a bad crop year?

- 2009 was a bad crop year with several challenges:
 - Wet conditions made harvest a challenge.
 - Field damaged corn from ear rot, etc. made post-harvest handling a challenge.
 - Higher levels of mycotoxin and mold in corn from the field made storage a challenge.
 - Higher levels of fines and broken corn

2013 was a good crop year !!!

CO₂ Emitted from Wet Corn

High-Moisture Levels in **Some New-Crop Corn** Deliveries May Warrant Atmospheric Testing to Protect Employees – NGFA, 2013

- Isolated incidents where the post-harvest respiration of some new-crop harvested corn appears to be occurring rapidly after unloading; thus, leading to **elevated levels of carbon dioxide (CO₂) and depleted oxygen levels** -- particularly in low-lying storage areas - both at farms and commercial facilities.

Challenges in Large Grain Stock Management

- On-farm bin sizes installed are larger in capacity.
- Most farm bins have no monitoring tool.
- When a monitoring tool is available, typically a temperature cable, it is not enough for effective management.
- Lack of effective management of large grain stocks.



Basic Concepts of Stored Grain Management

- Grain is a biologically active material and therefore it will deteriorate in storage under favorable conditions
- Stored grain quality cannot be improved but maintained.
- Therefore, knowing the history and initial grain quality is an important first step in managing grain in storage

Grain Quality after Storage = $F(\text{Quality}T_s, \text{Mgt}, ?)$

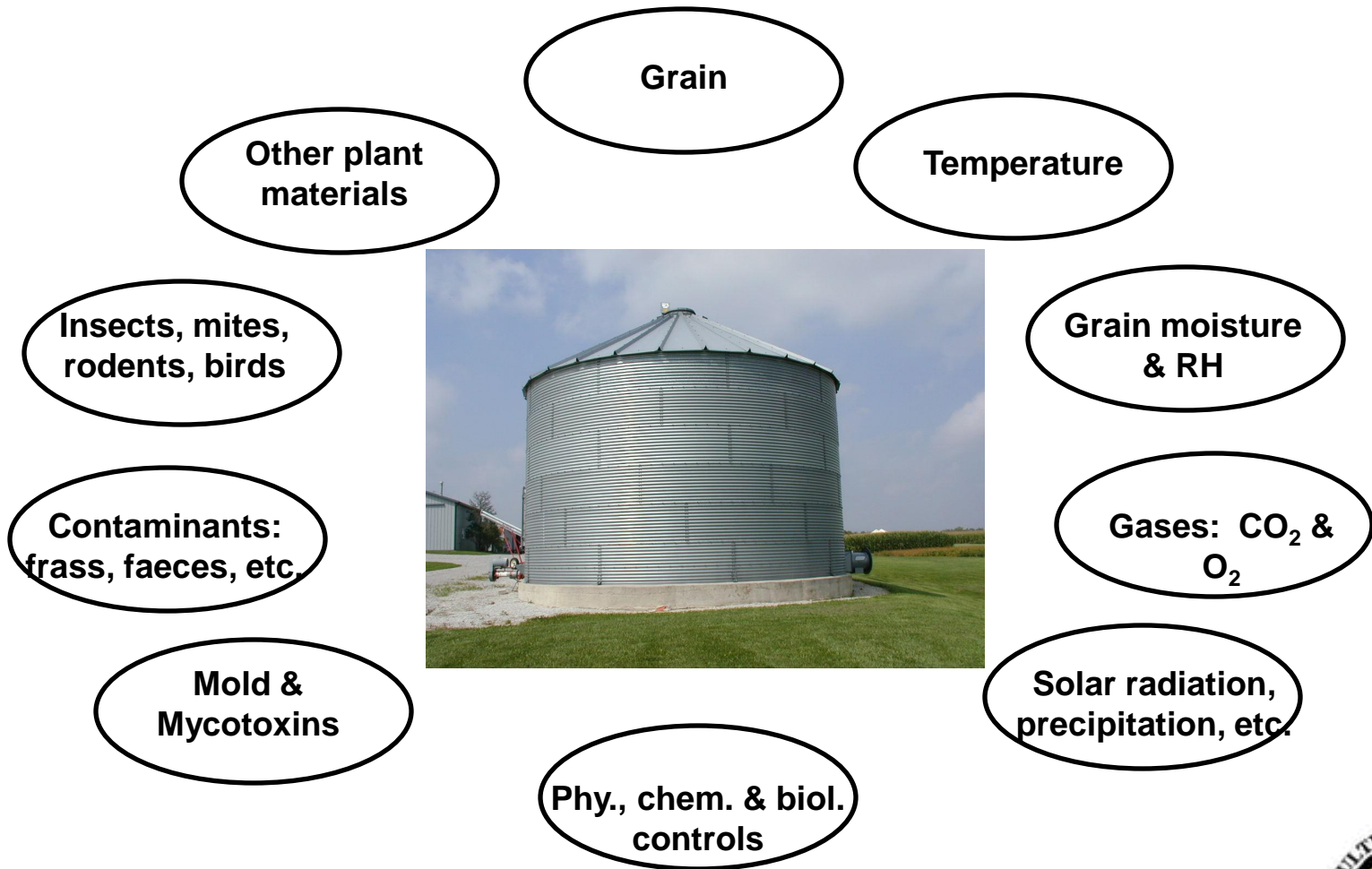
How can we accurately predict this?

Your Investment in Storage



Maintaining Quality is Job # 1 in Stored Grain Management

The Stored Grain Ecosystem



Factors that Affect Grain Spoilage in Storage

Grain deterioration of stored grain depends on

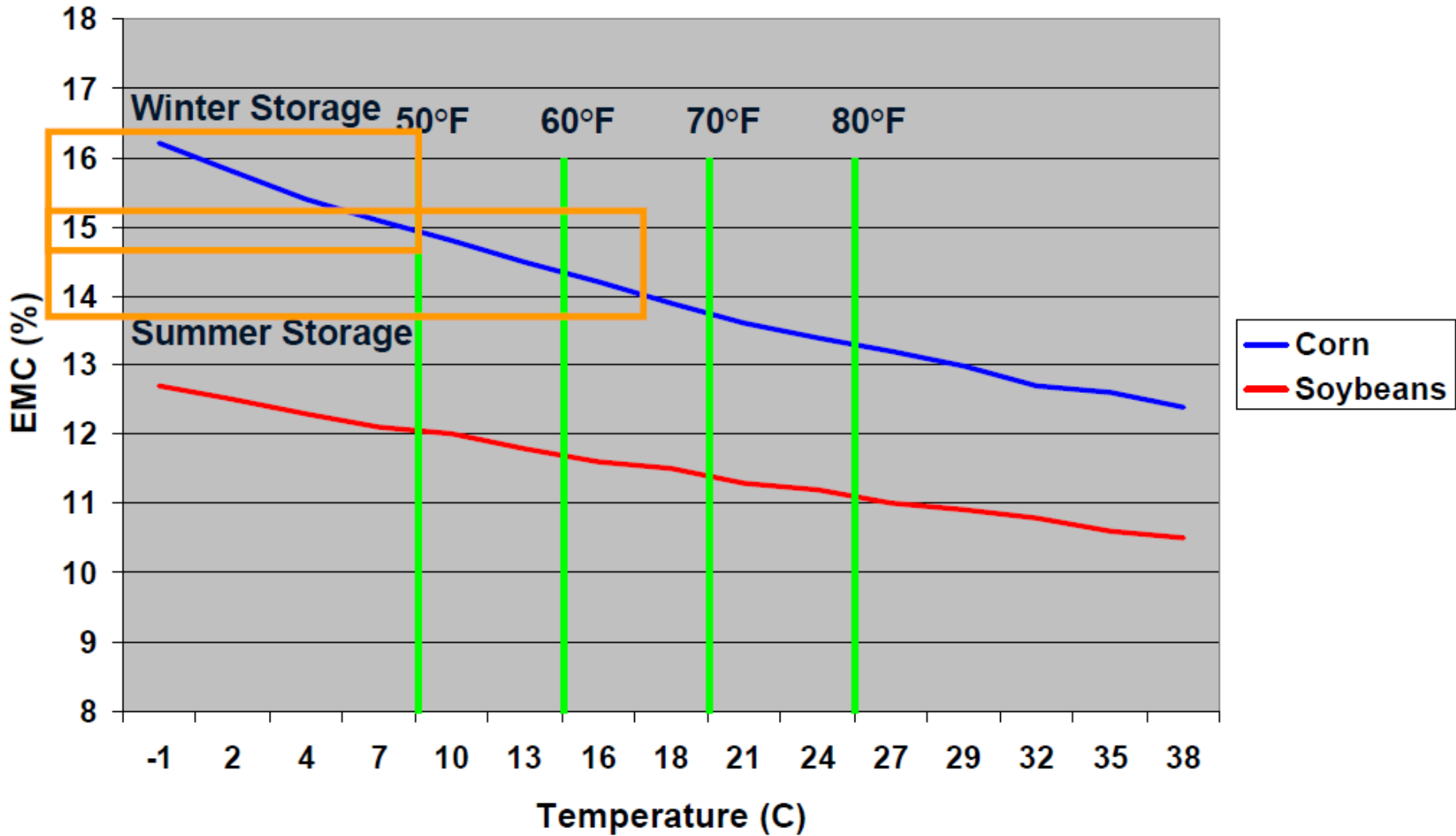
- Moisture, broken kernel, fines and foreign material
- Initial storage mold infestation
- Initial insect pest infestation and insect pest type
- Grain quality (presences of fines/intact kernels)
- Sanitation
- Stored grain environment
 - Temperature and Relative Humidity (RH)
 - CO₂ and O₂
- Stored Grain Management

Storage Life of Grain

| Maximum storage time (months) for corn and soybean* | | | | | | | |
|--|---|-------------|-------------|-------------|-------------|-------------|------------|
| Corn temperature ° F | Moisture Content Corn (top %), Soybean (bottom%) | | | | | | |
| | 13%, 11% | 14%, 12% | 15%, 13% | 16%, 14% | 17%, 15% | 18%, 16% | 24% N/A |
| 40 | 150 | 61 | 29.0 | 15.0 | 9.4 | 6.1 | 1.3 |
| 50 | 84 | 34 | 16.0 | 8.9 | 5.3 | 3.4 | 0.5 |
| 60 | 47 | 19 | 9.2 | 5.0 | 3.0 | 1.9 | 0.3 |
| 70 | 26 | 11 | 5.2 | 2.8 | 1.7 | 1.1 | 0.2 |
| 80 | 15 | 6 | 2.9 | 1.6 | 0.9 | 0.9 | 0.06 |
| *Based on 0.5% maximum dry matter loss—calculated on the basis of USDA research at Iowa State University. Corresponds to one grade number loss; 2-3% points in damaged seeds. Soybean approximated at 2% lower moisture than corn. | | | | | | | |

Source: <http://www.extension.iastate.edu/CropNews/2009/1015hurburghelmore.htm>

Safe Grain Moisture Content (ERH = 65%)



Source: Dr. Dirk Maier, Kansas State University

S.L.A.M.

Sanitation

Loading

Aeration

Monitoring

The concept of SLAM for stored grain systems was developed in the 1990s by Purdue University Extension Engineer and Specialists: **Dr. Dirk Maier** (Agricultural Engineer), **Dr. Linda Mason** (Stored-Product Entomologist) and **Dr. Charles Woloshuk** (Stored-Product Pathologist).

Acknowledgements:

Thanks to Dr. Linda Mason, Purdue Entomology Department and Dr. Dirk Maier, Department Head at Kansas State University Grain Science Program and Mr. Dave Crompton, Integris USA, LLC. for providing the contents of this presentation.



Sanitation

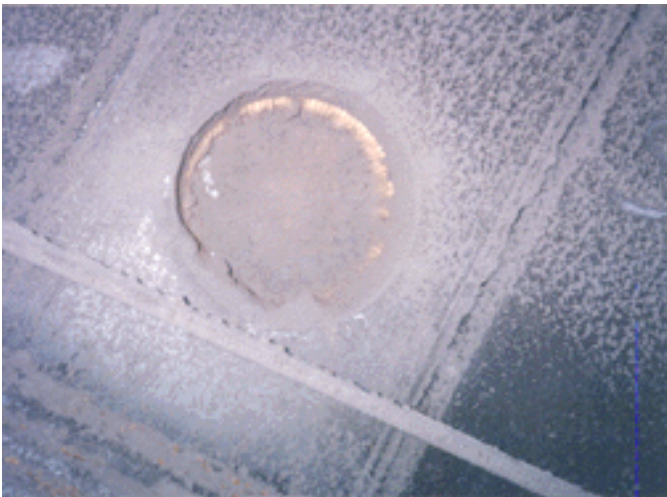
Think Insect Clean!



Eliminate Insect Harborage – under floor sanitation, cracks and crevices



Clean Roof Vents to Prevent Aeration Problems



Pest Prevention



External
Spray



Internal
Spray

Empty Bin Treatment

Loading

Eliminate the potential for loading by:

- Cleaning grain to remove fines and foreign material
- Drying grain gently by using appropriate drying techniques to prevent stress cracks
- Handling gently using appropriate grain conveying devices

Pre-Cleaning



US-Nigeria Commodity Storage Workshop

Cushion Boxes and Flow Retarders



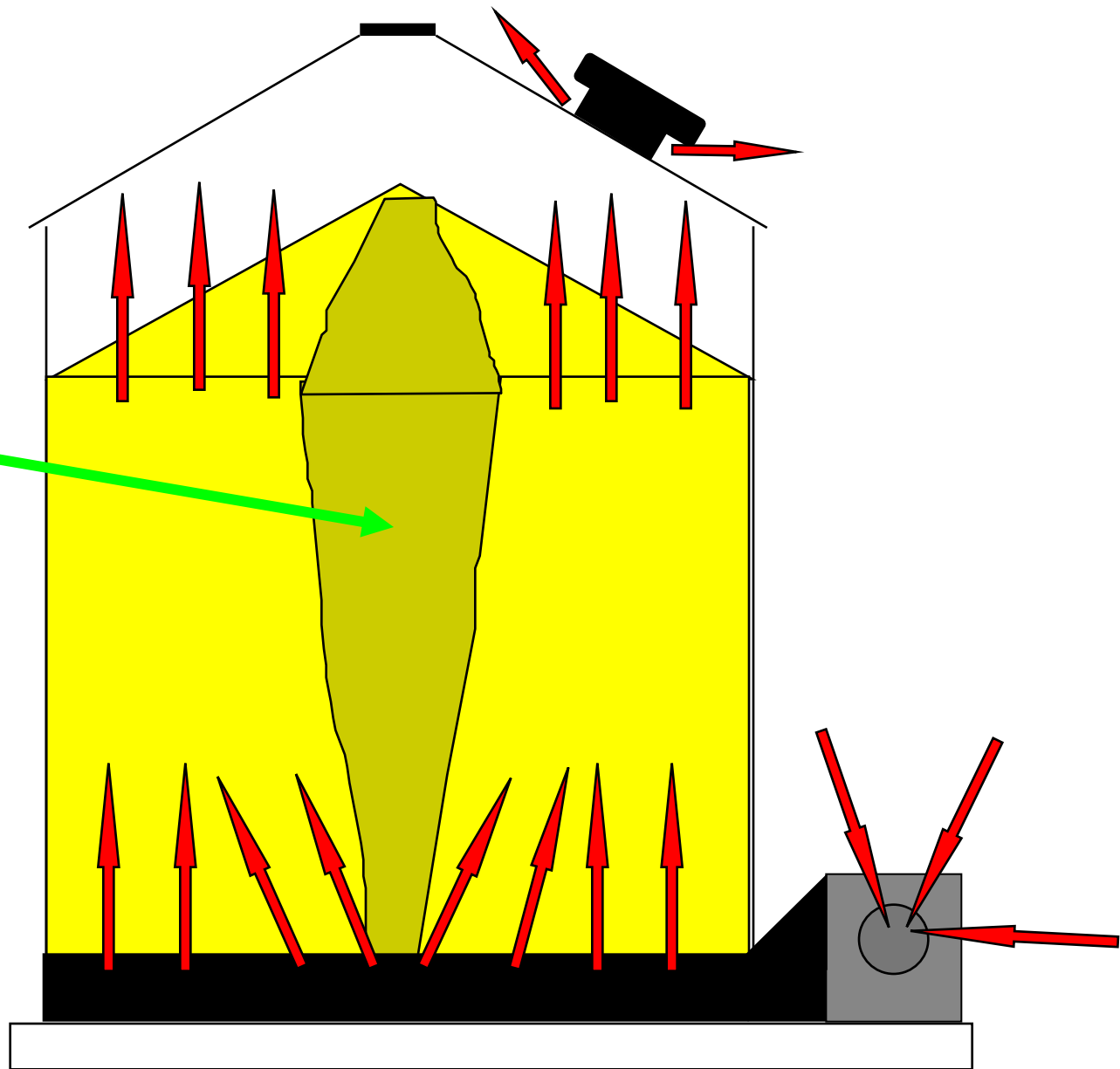
Bin Entrapment Rescue in Spring 2005



What do you think was the cause of this event?



- Core of fines
 - Foreign Material (FM)
 - Broken grain & fines
 - Weed seeds



Aerate – to slow down bio-activity

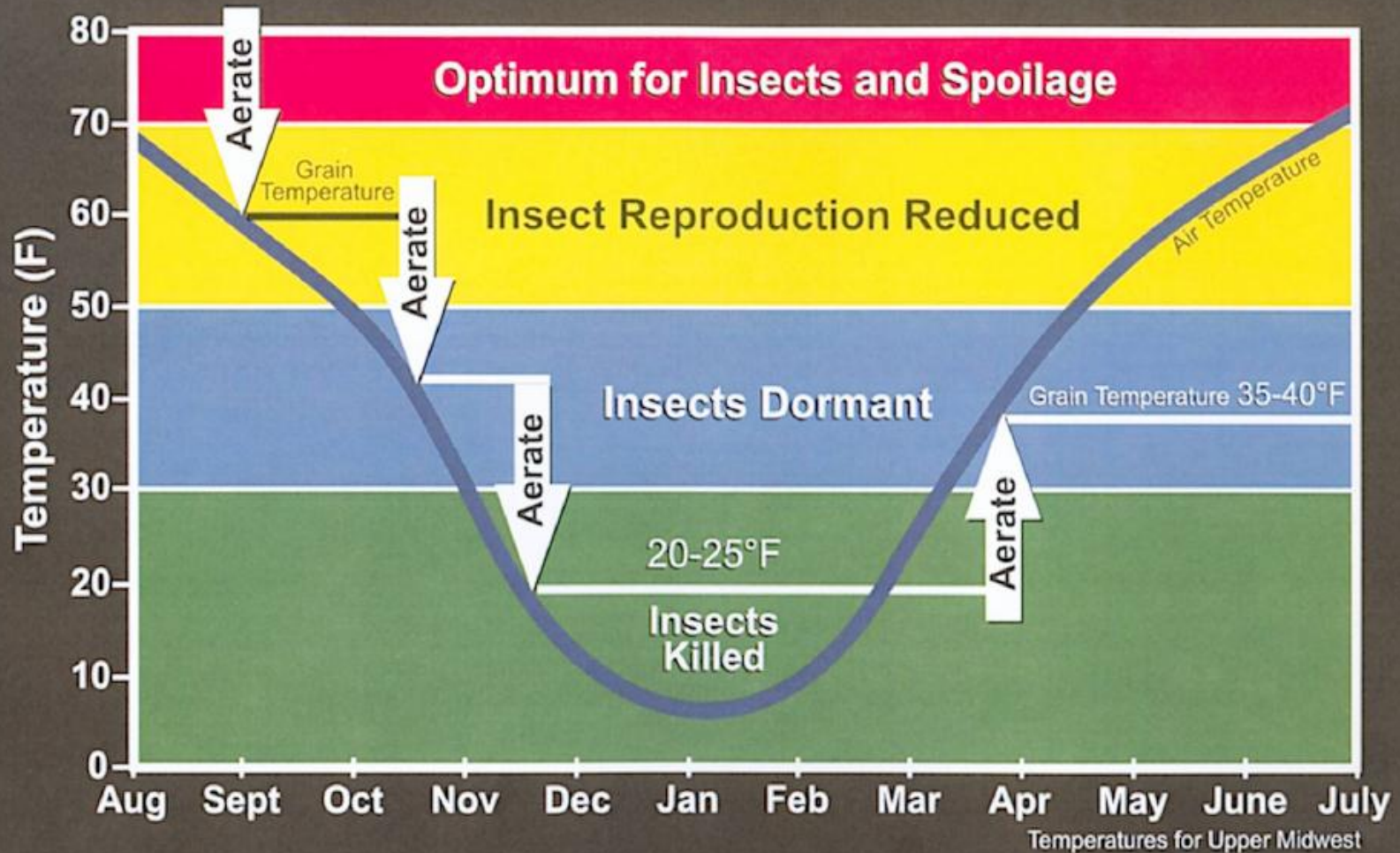


Temperature Influence on Insects

Fields, 1992

| Temperature (°F) | Effect |
|------------------|-------------------|
| 122+ | Death in minutes |
| 95+ | Development stops |
| 77-90 | Optimum |
| 66-77 | Sub-optimum |
| 41-60 | Death in days |
| 0 | Death in minutes |

Cool Grain to Prevent Storage Problems



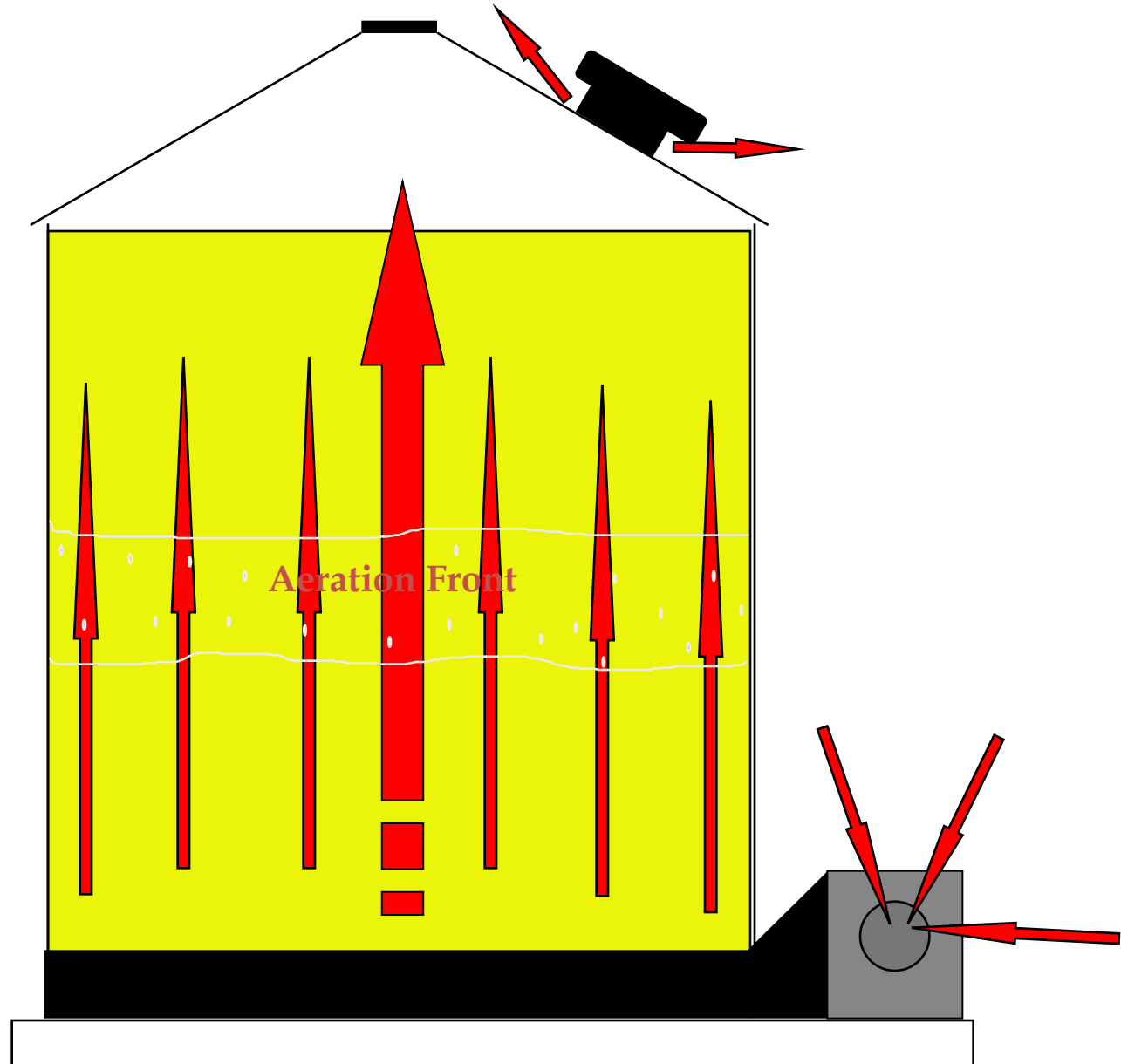
* Prevent crusting due to moisture migration by cooling grain to within 15°F of average outdoor temperatures.
* Cooling grain by 10°F doubles its allowable storage time

Dr. Kenneth J. Hellevang, F
NDSU Extension Service

Source: Dr. Kenneth Hellevang, North Dakota State University

Move Aeration Front through grain mass as quickly as possible!

Depends on Air
EMC and
Airflow



Aeration Phases

- **Phase 1: Fall Cool Down**

- Lower grain temperatures stepwise

- October – 40-45°F
- November – 35-40°F
- December – 28-35°F

- **Phase 2: Winter Maintenance**

- Maintain low temperatures with intermittent aeration:
January, February- 28-35°F

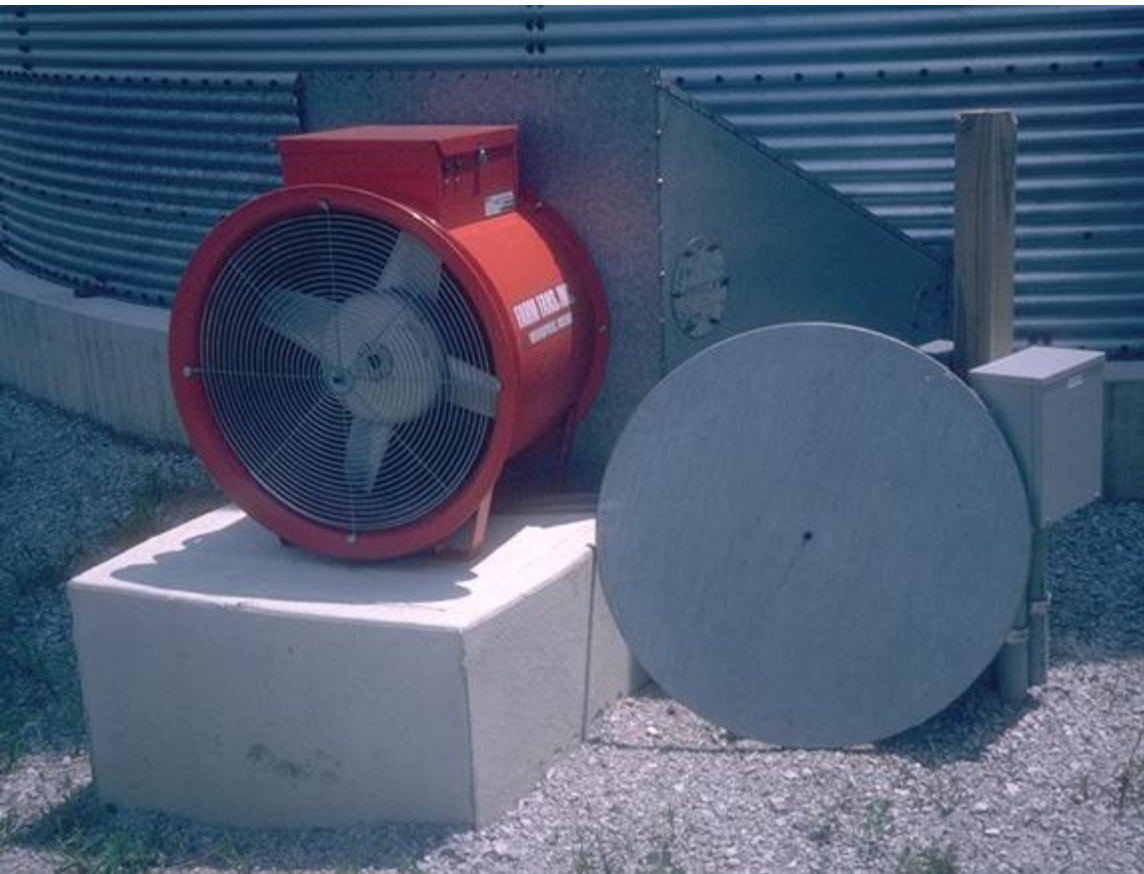
- **Phase 3: Spring Holding**

- Keep grain cold from winter aeration

- Seal fans
- Ventilate only headspace intermittently

**No
Summer
Aeration
to warm-
up grain !**

Source: Dr. Dirk Maier, Kansas State University

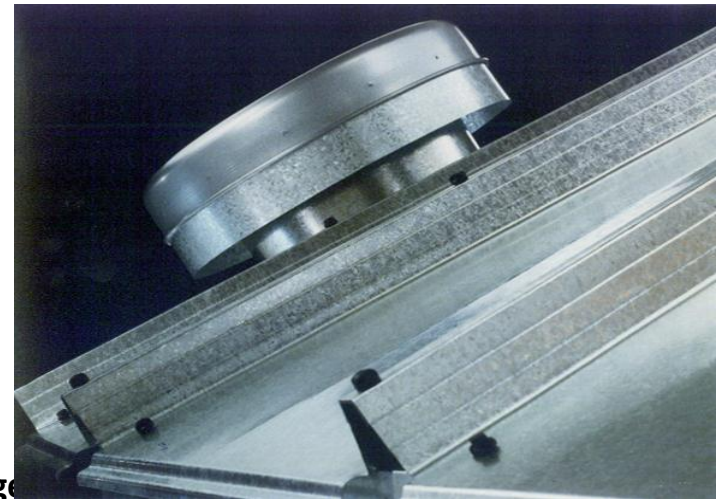
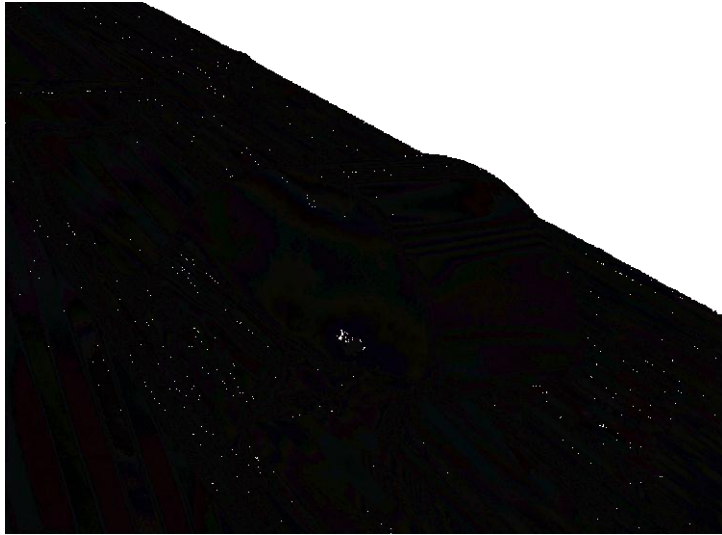


Open Fan



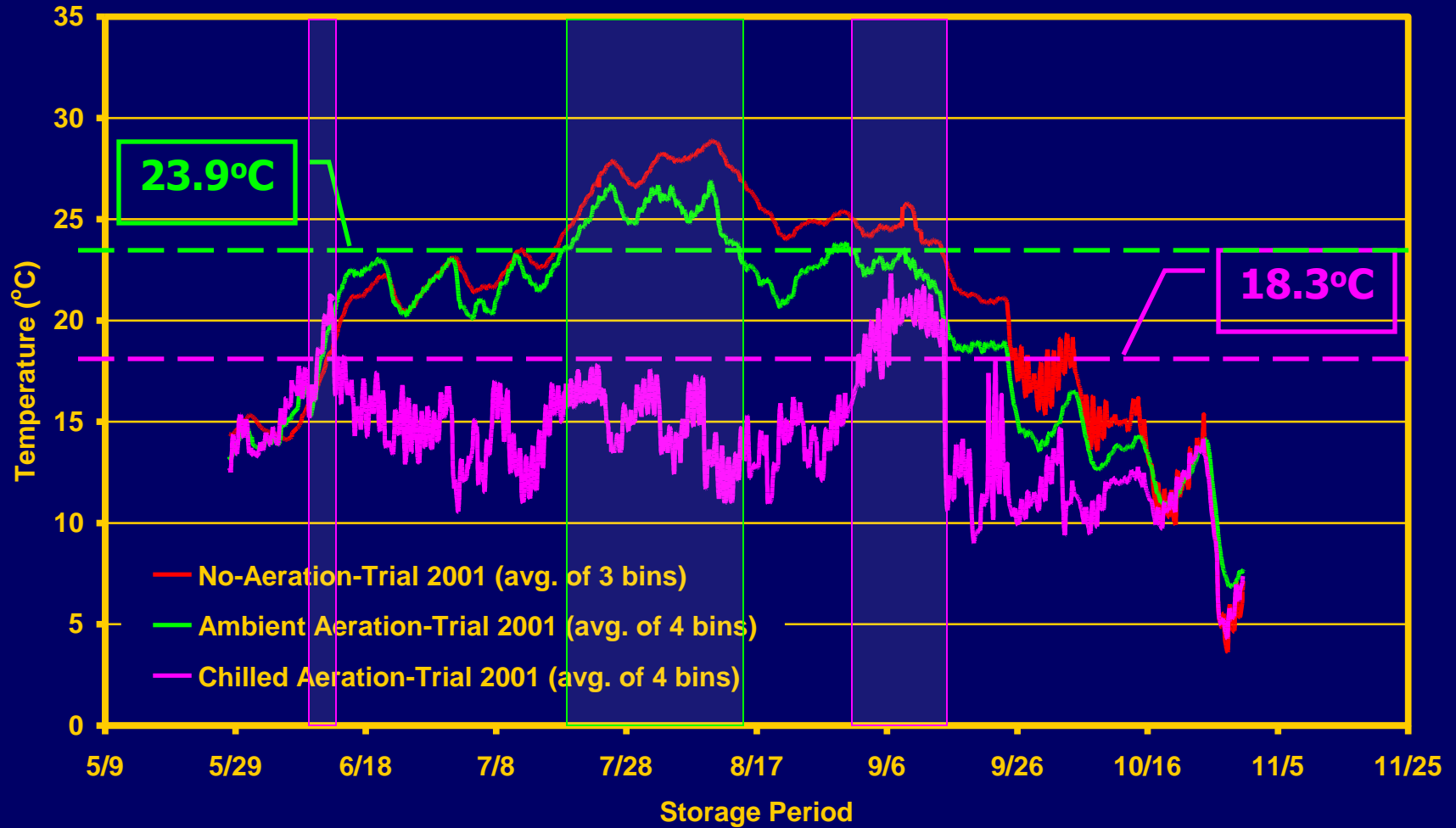
Sealed Fan

Headspace Ventilation

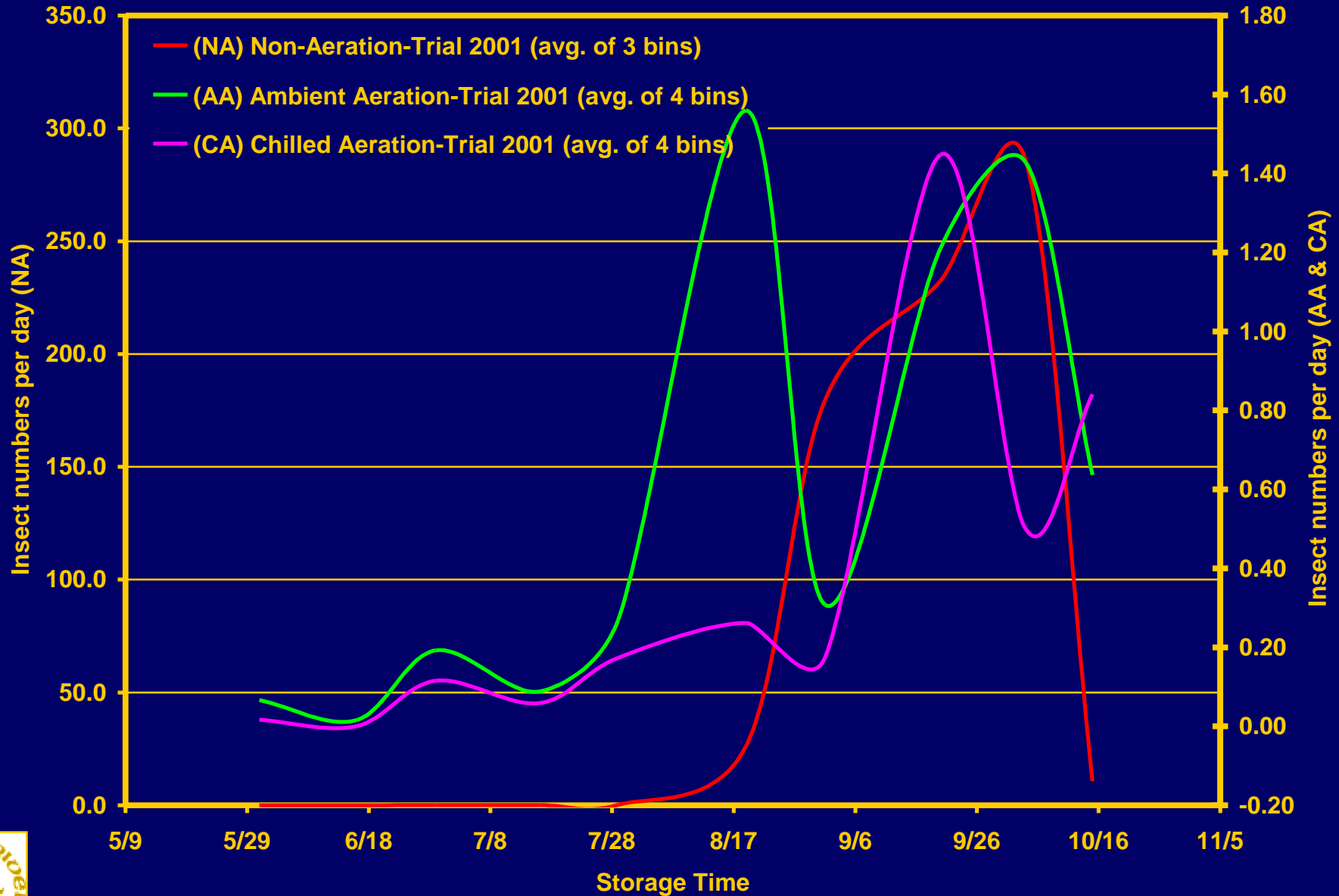


Storage

Grain bulk temperature - 2001

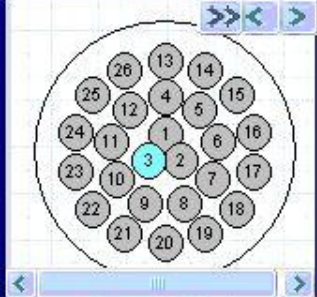
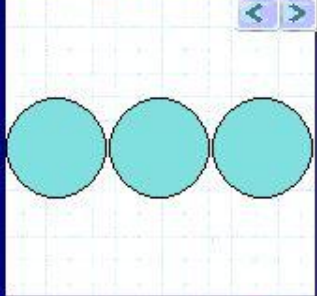


Probe Trap Data - 2001



Monitoring:

You can't manage what you
don't know is there





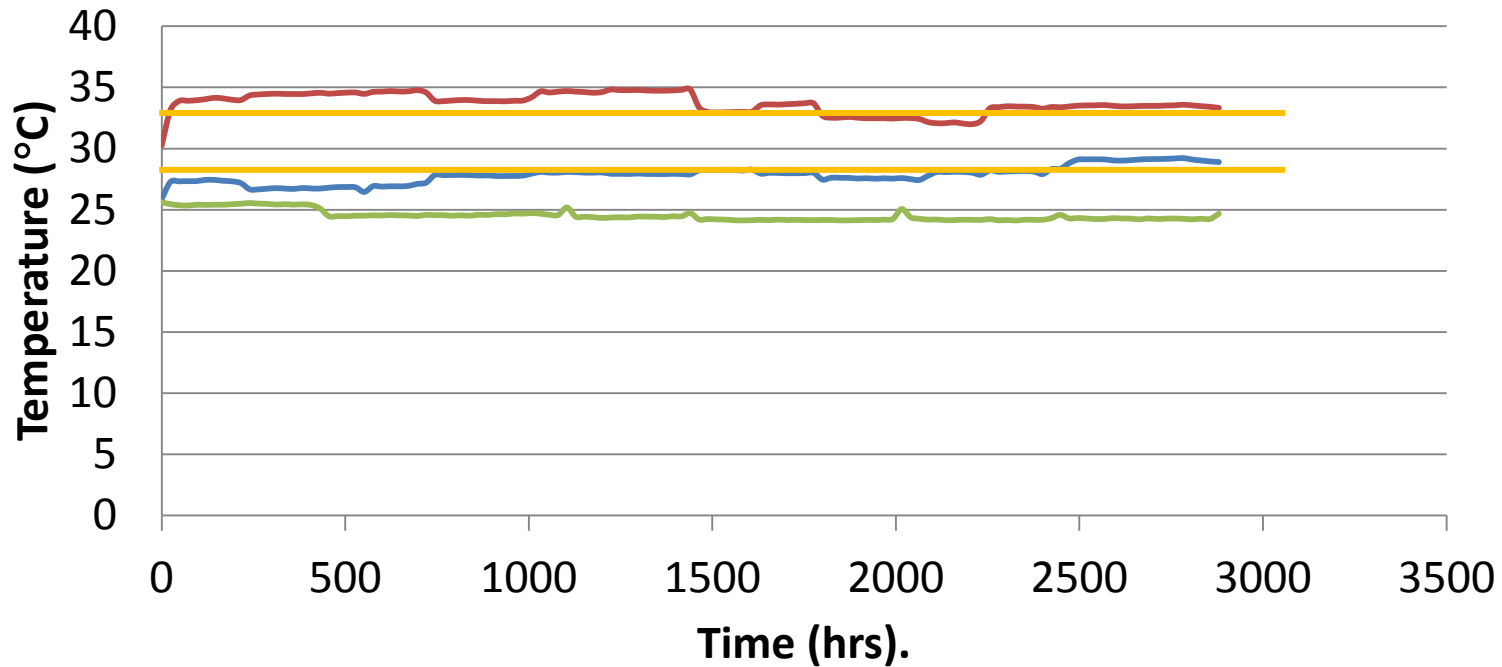
**Monitor
temperature with
temperature cables**

**It takes a while to
detect deterioration
and hot spots using
temperature cables
alone**



Temperature – 21.23% mc

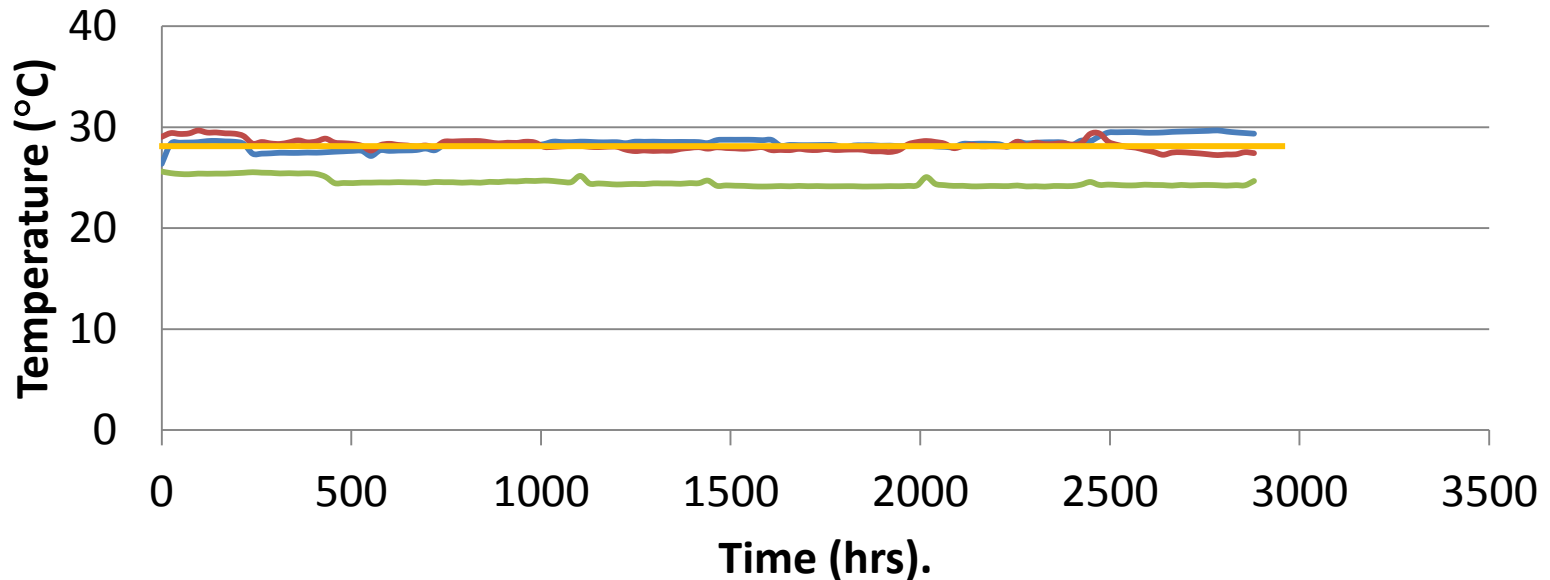
Response of mold to temperature rise at 21.23% m.c. at 25 °C



— Non-insulated - 21.23% mc — Insulated - 21.23% mc
— Chamber temperature

Temperature – 14.60% mc

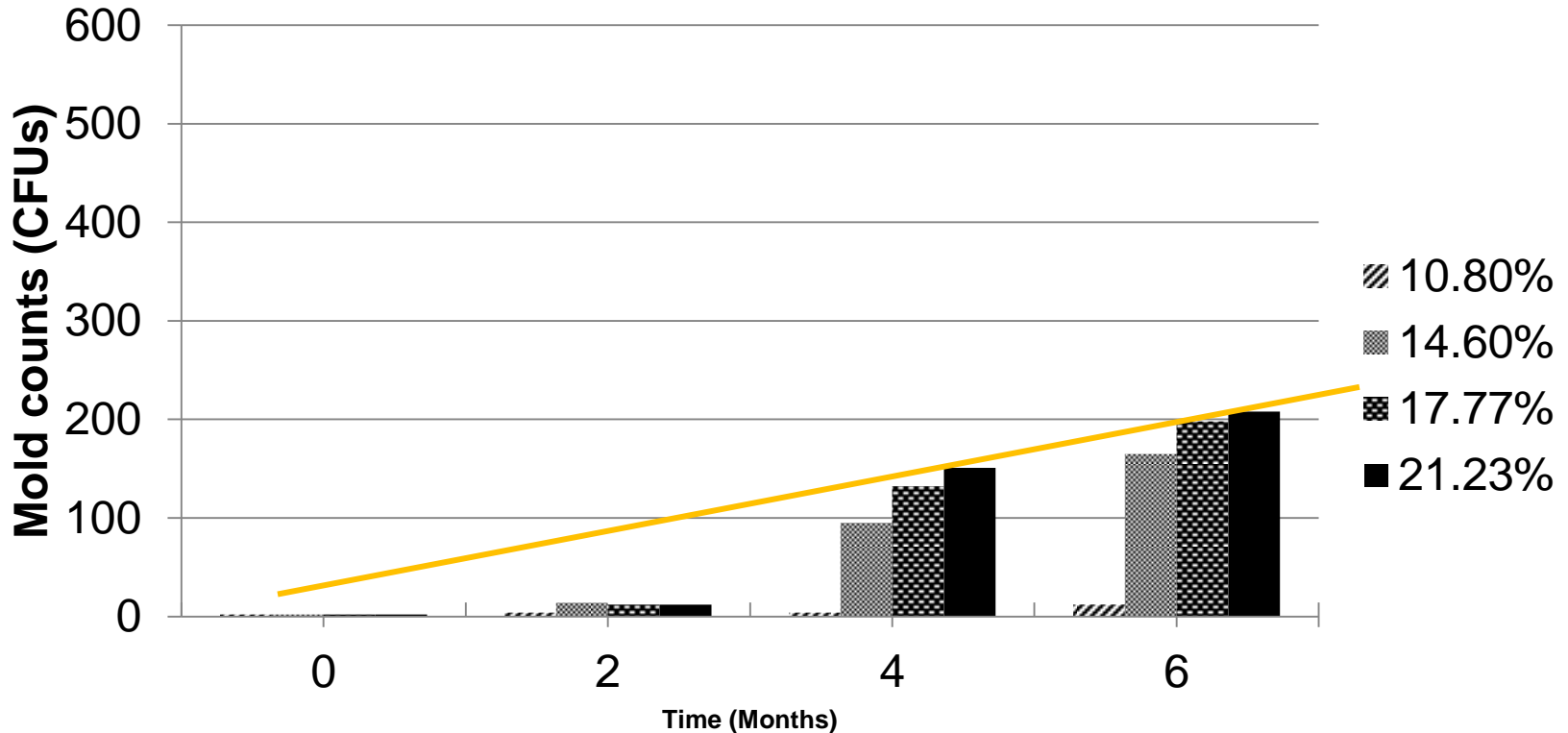
Response of mold to temperature rise at 14.60% m.c. at 25 °C



- Non-insulated - 14.60% mc
- Insulated -14.60% mc
- Chamber temperature

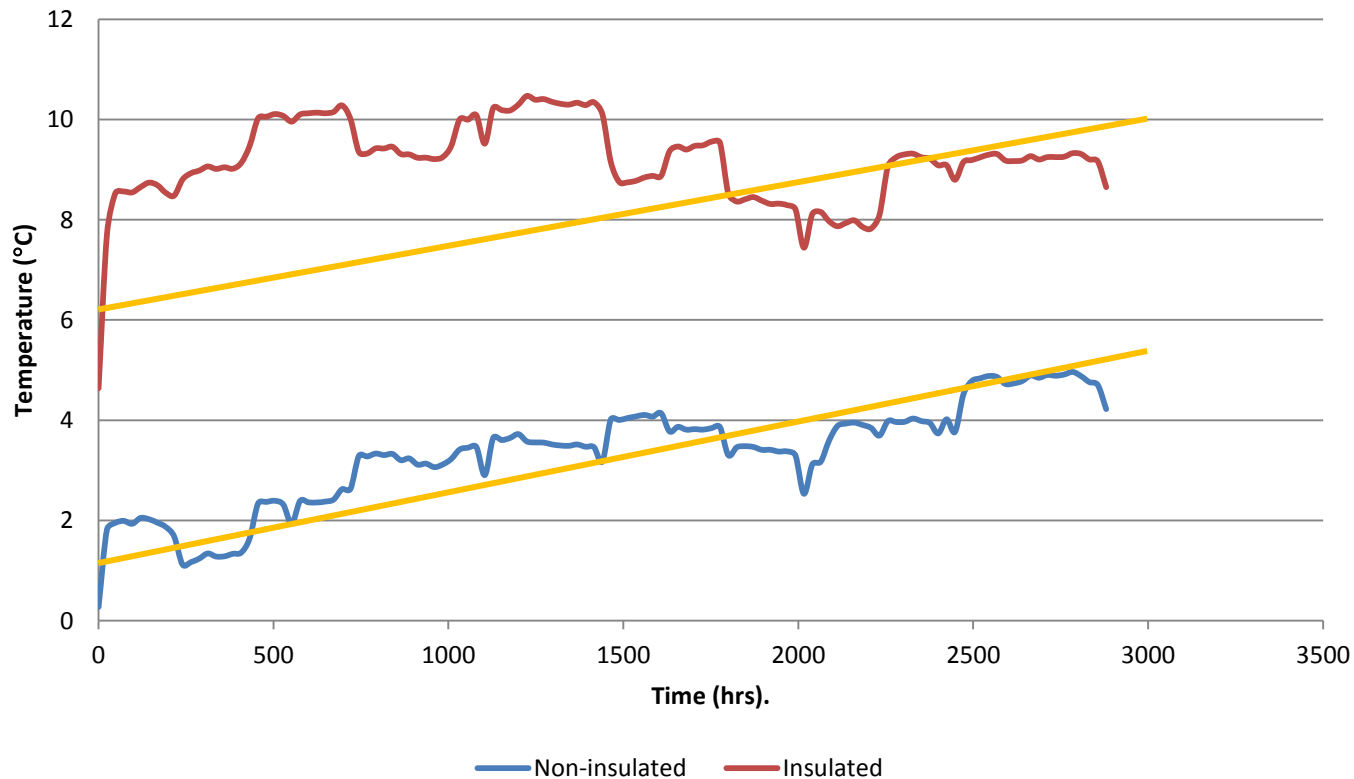
Mold counts (CFUs) - 25°C

Effect of hermetic storage on mold counts at 25°C



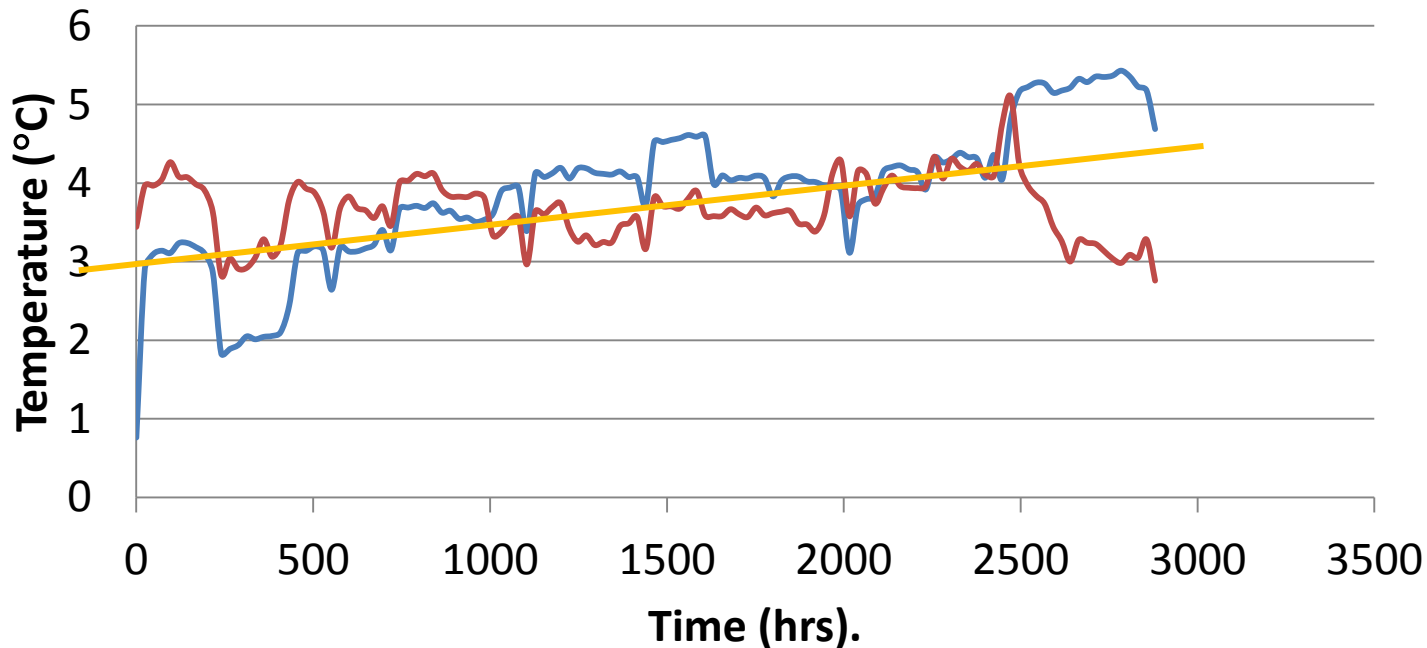
Grain & Ambient Temp Difference

*Temperature difference from ambient conditions 25 °C -
21.23% mc*



Grain & Ambient Temp Difference

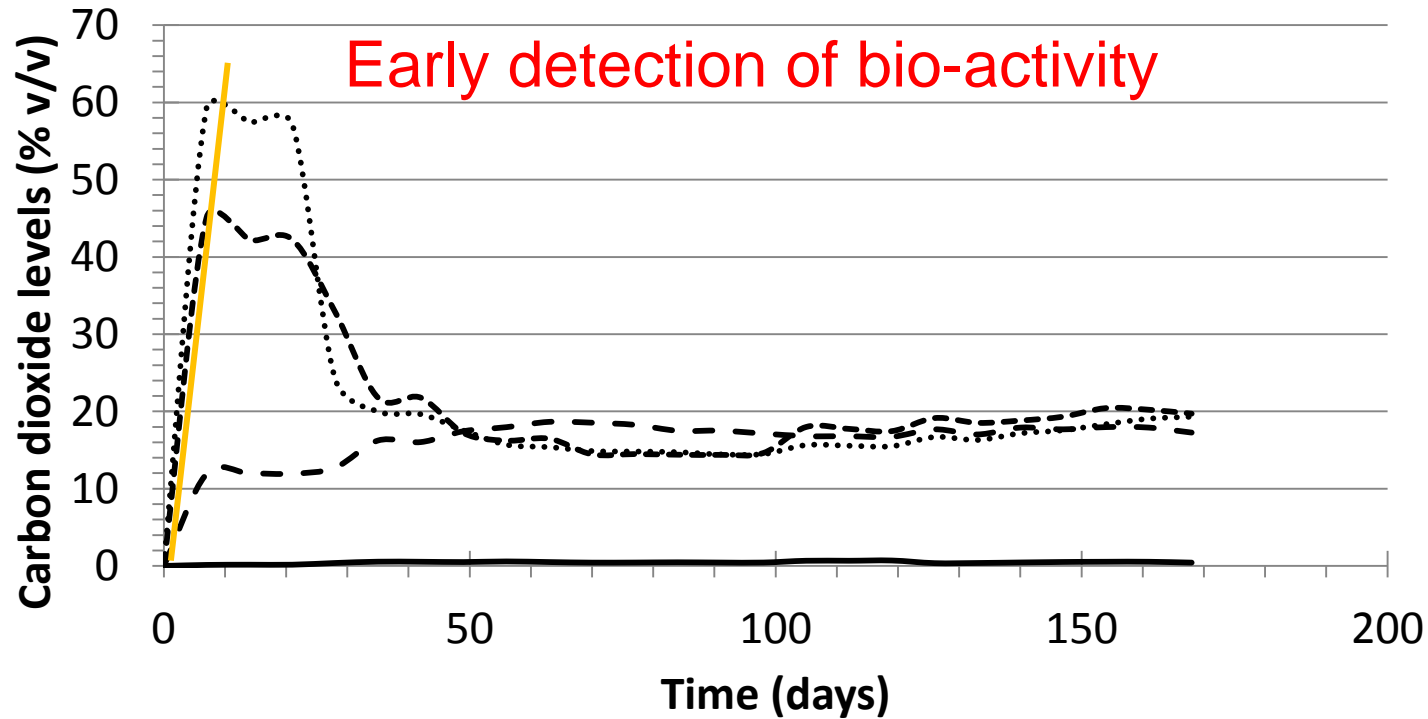
*Temperature difference from ambient conditions 25 °C -
14.60% mc*



— Non-insulated — Insulated

Monitored CO₂ levels during storage

Carbon dioxide levels in hermetic storage at 25 °C



— 10.80% - - 14.60% - - - 17.77% 21.23%

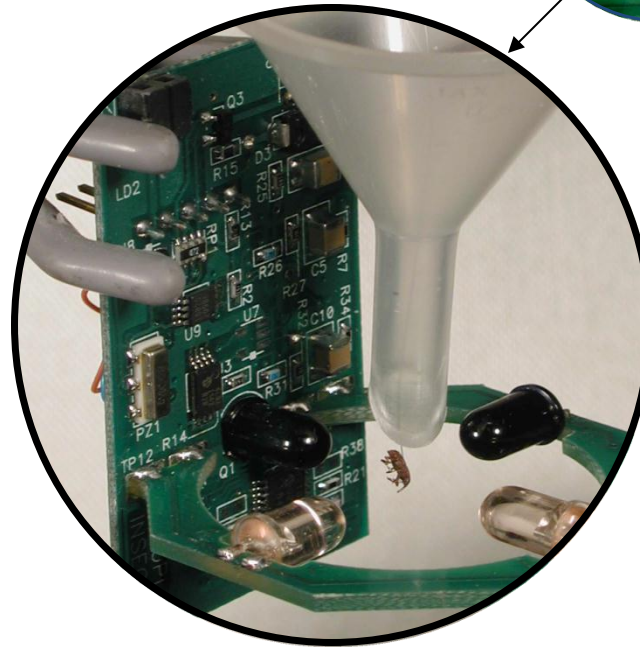
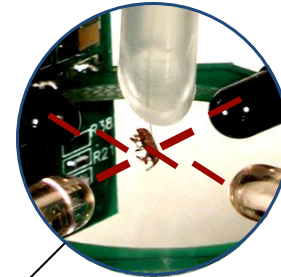
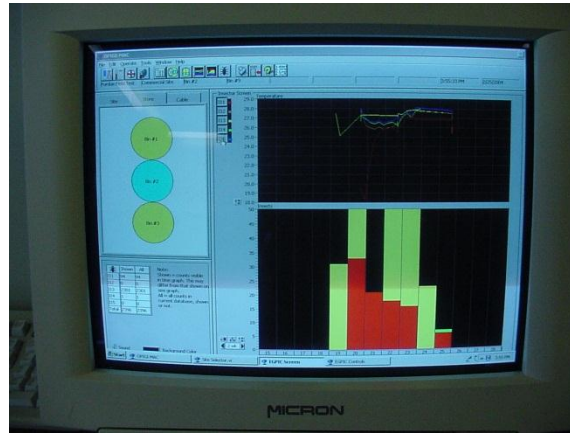
Insect Monitoring – Pitfall trap



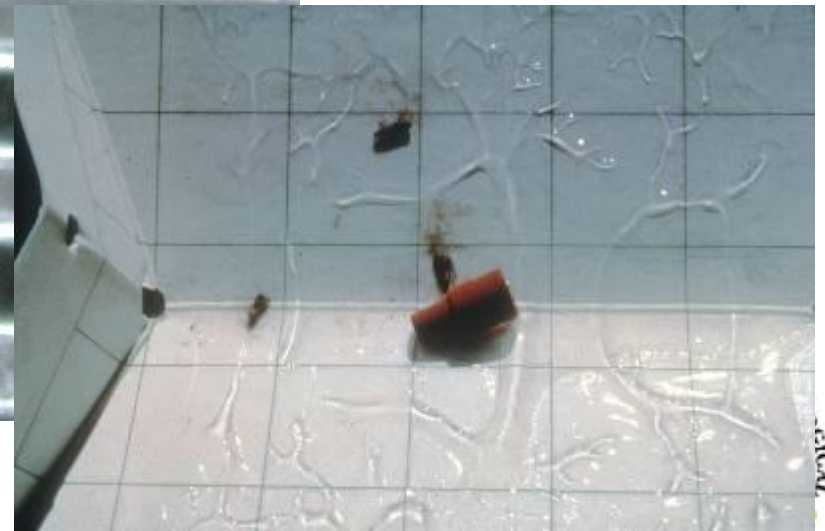
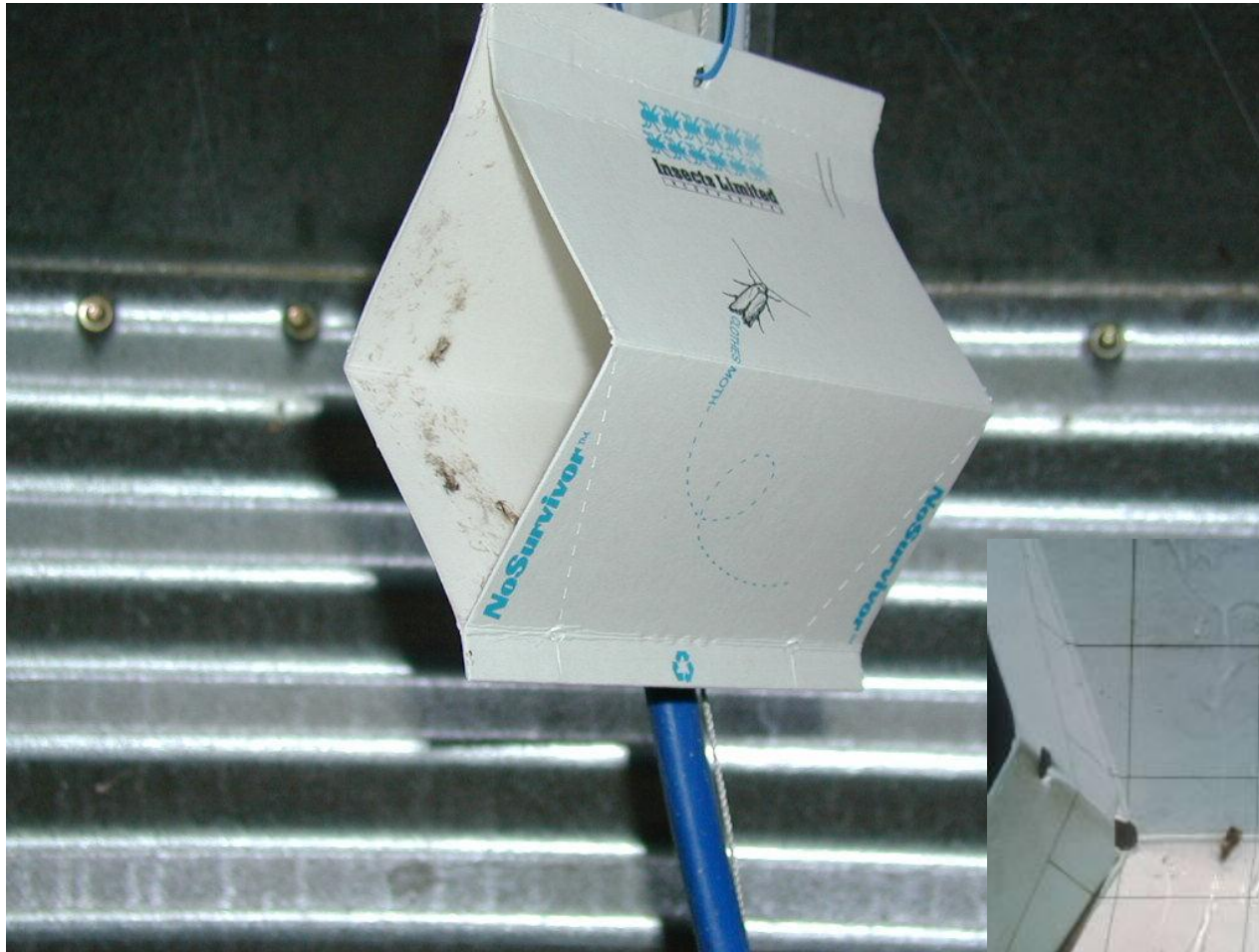
Real-time Insect Detection System

As the insect breaks the Infrared beams, its size is registered. At the same time, the time and temperature is captured in the memory on the built-in microprocessor.

Available from:
www.opisystems.com/
Integris USA, LLC.



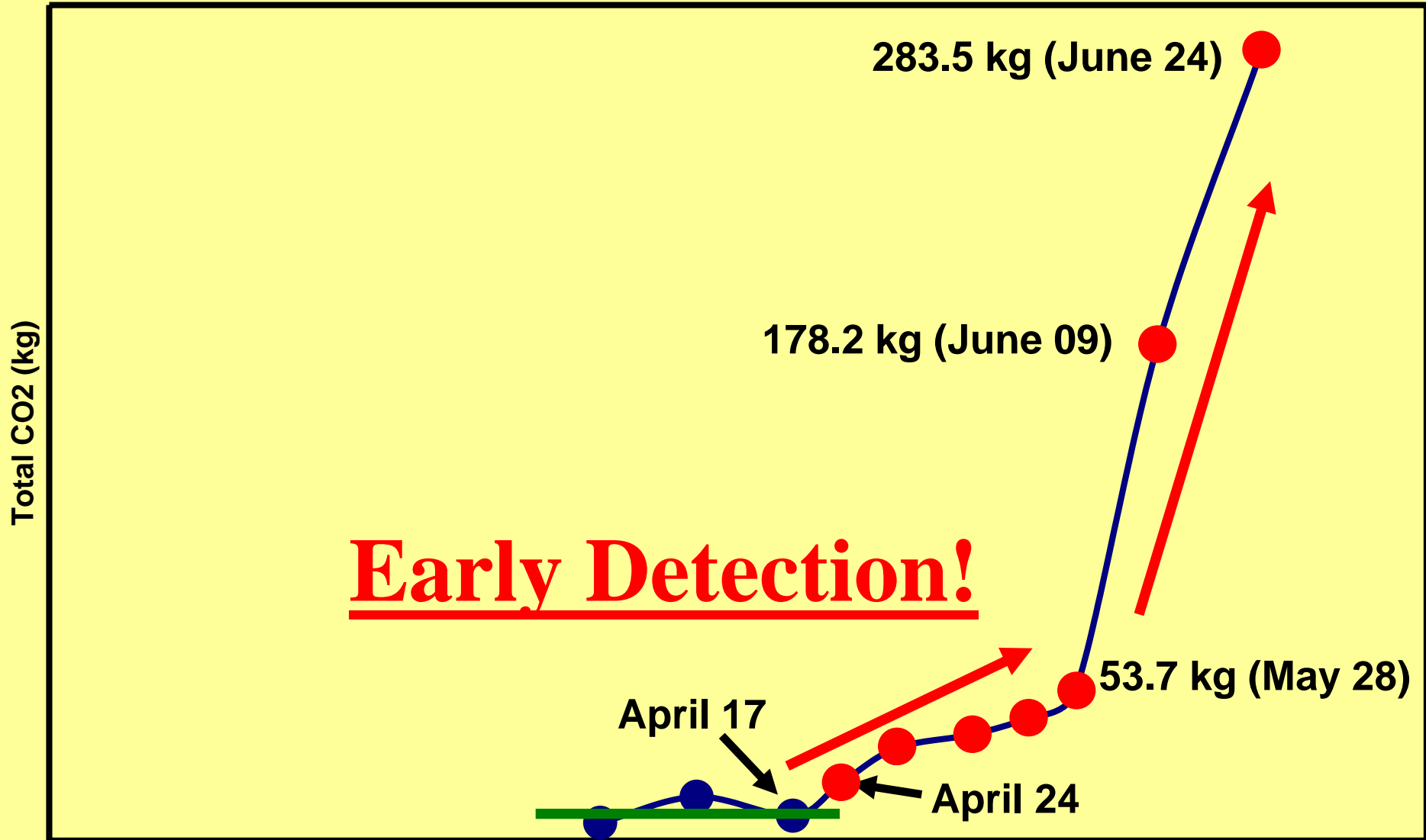
Insect monitoring - Pheromone flight trap



CO₂ Monitors – Early Spoilage Detection



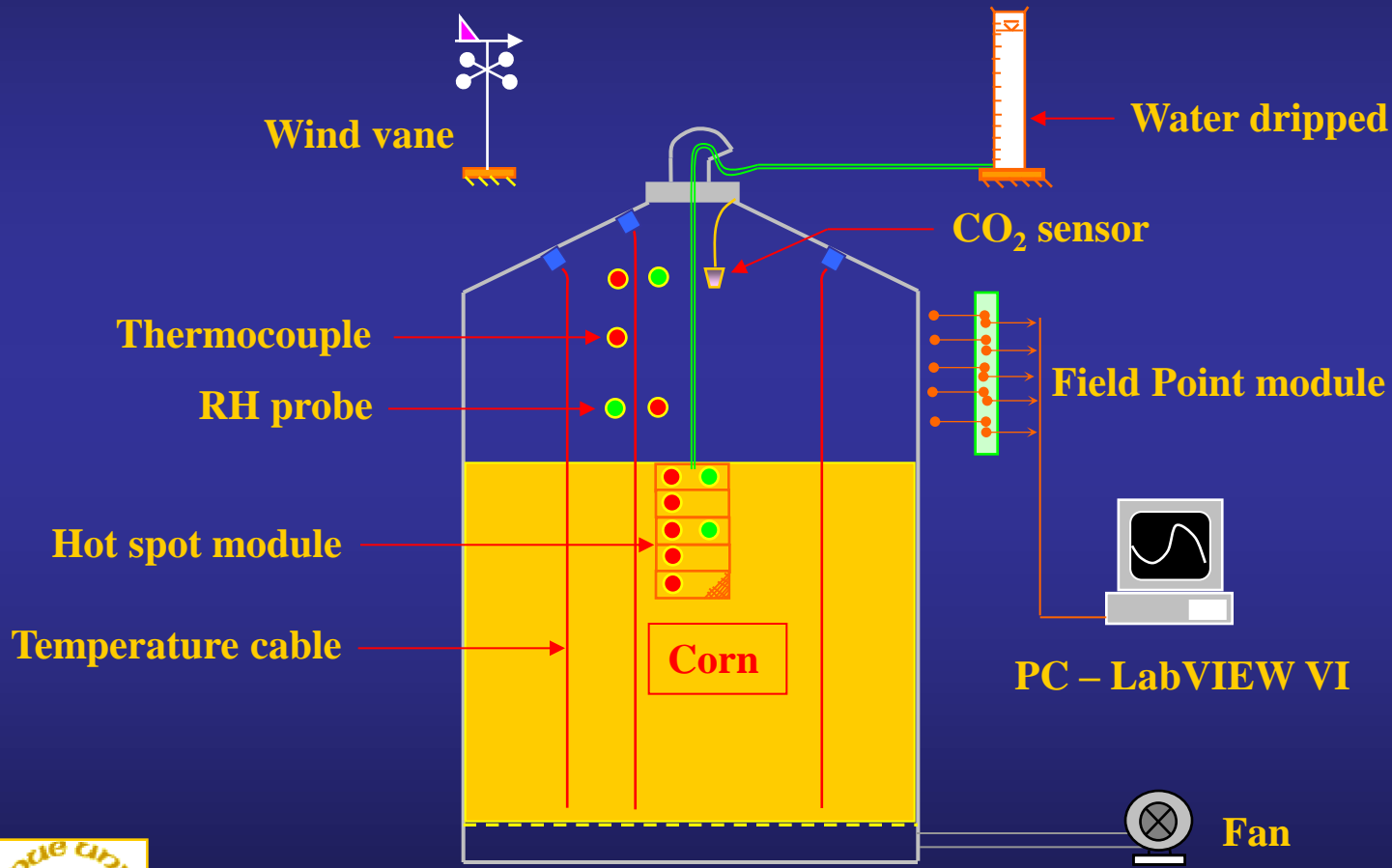
The Andersons, Delphi - Tank 54 (Semi-wet 17.5% MC)
Total CO2 (kg)



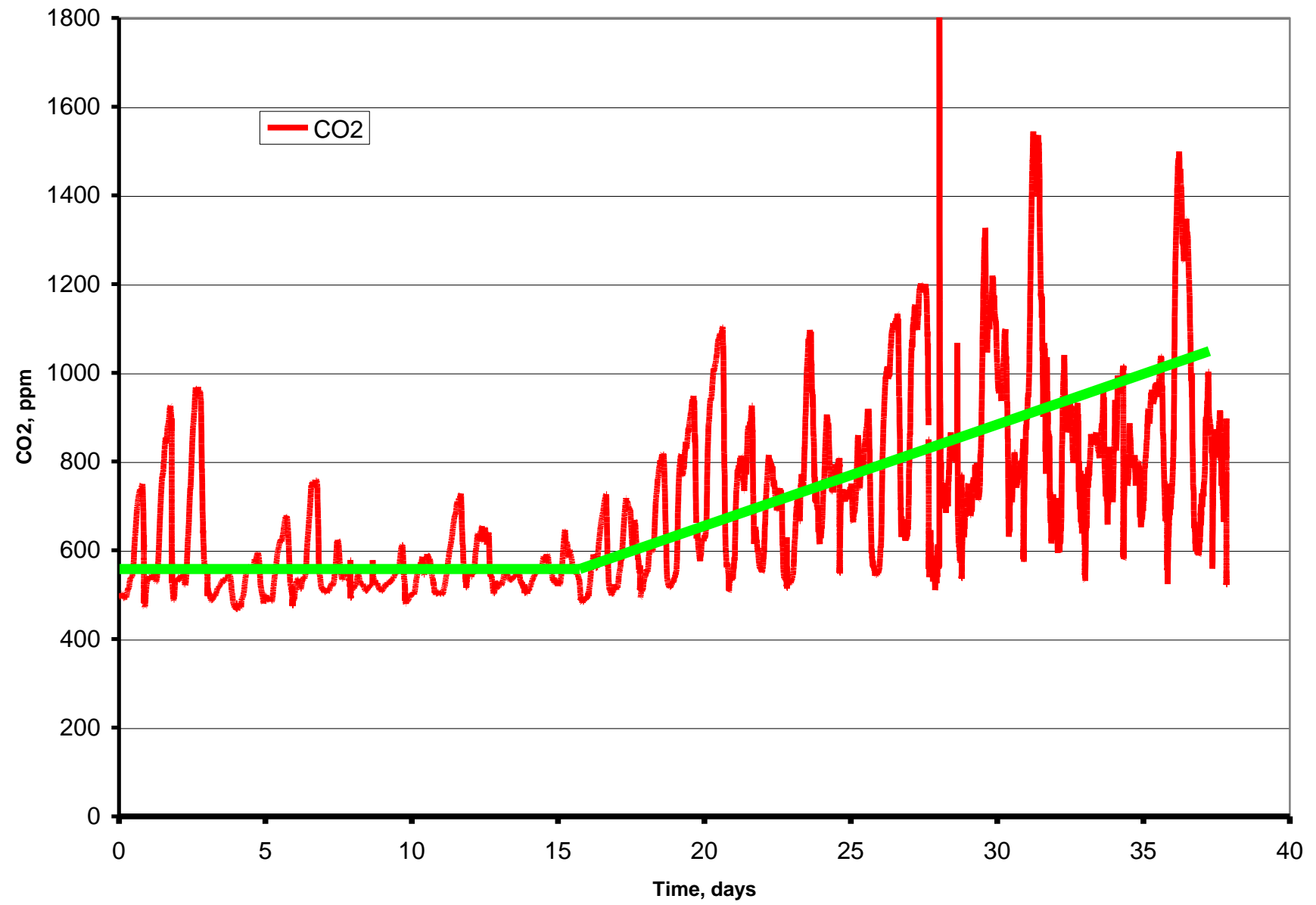
Spoilage in Tank 54



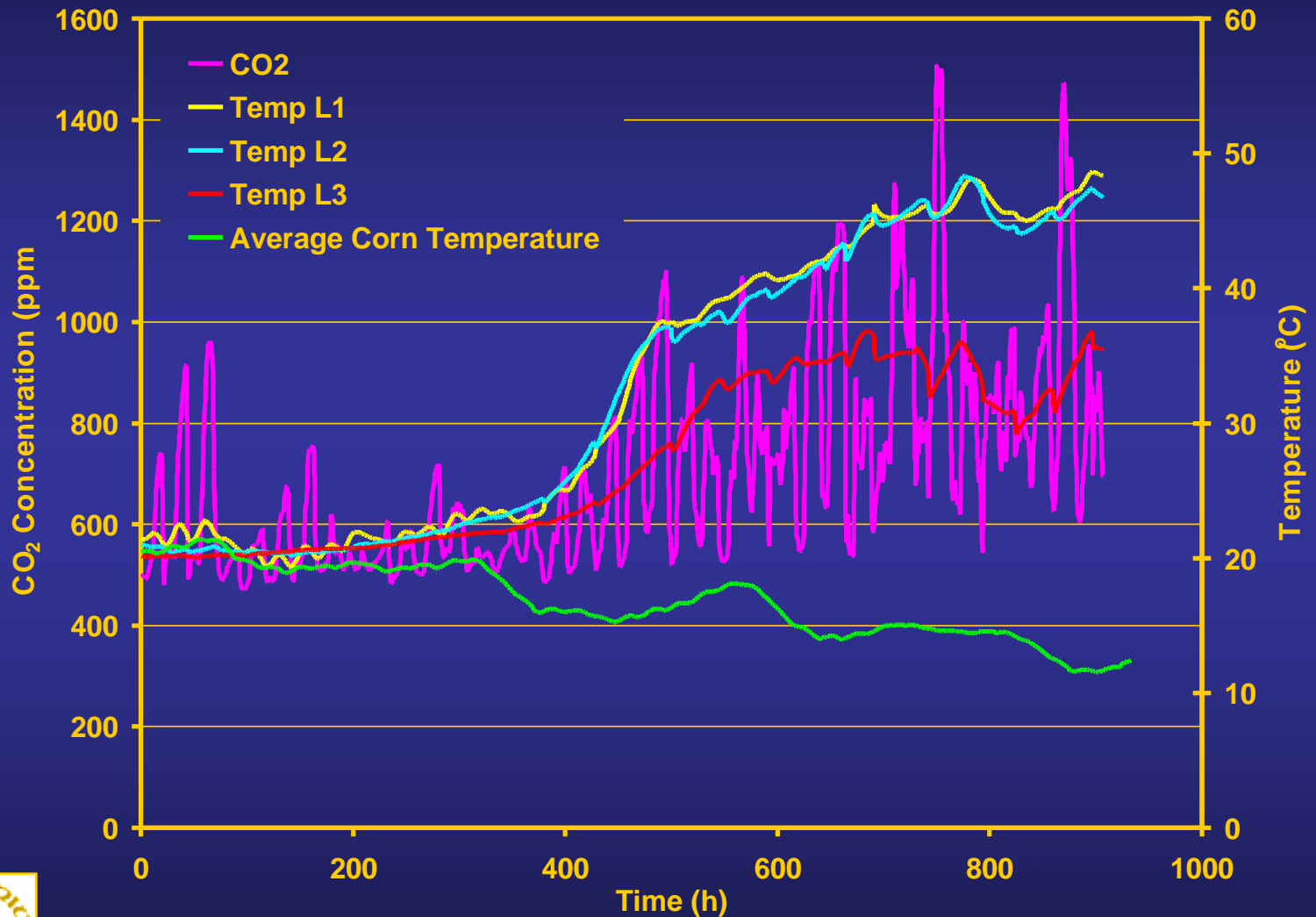
Experimental Set-up



CO2 Detection during Corn Storage

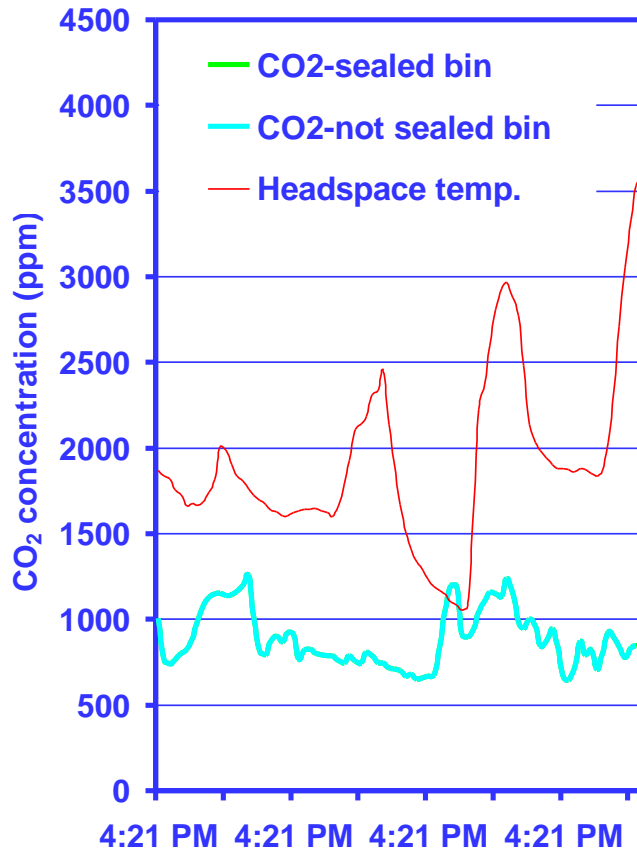


CO₂ and Hot spot Temperature Data



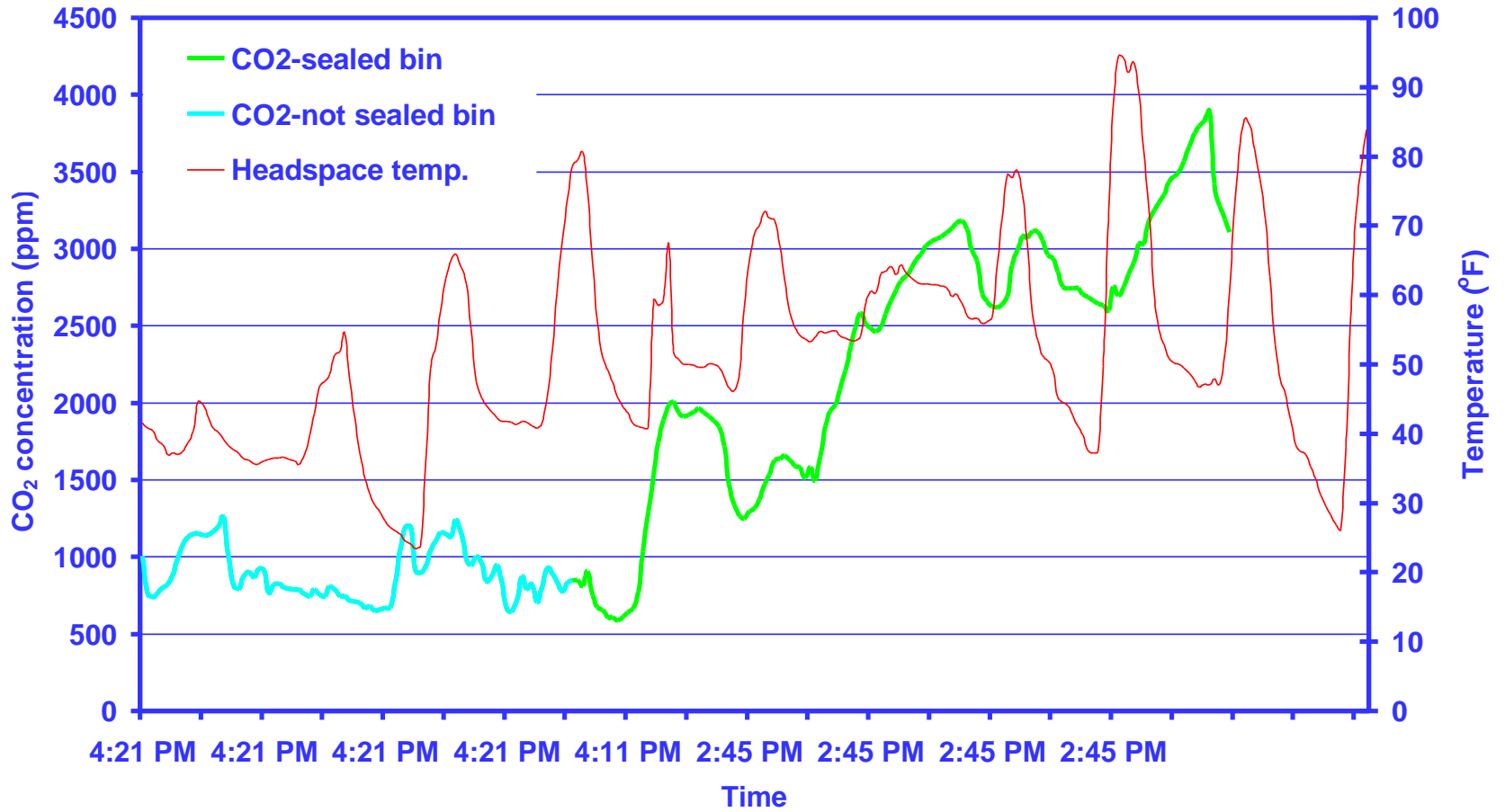
CO₂ concentration in the headspace of PHERC

pilot bin 16 due to a hot spot (10/27/01-11/5/01)



CO₂ concentration in the headspace of PHERC

pilot bin 16 due to a hot spot (10/27/01-11/5/01)



Hot spot core at the center of bin 16 caused by leakage



Grain Susceptibility to Spoilage Test

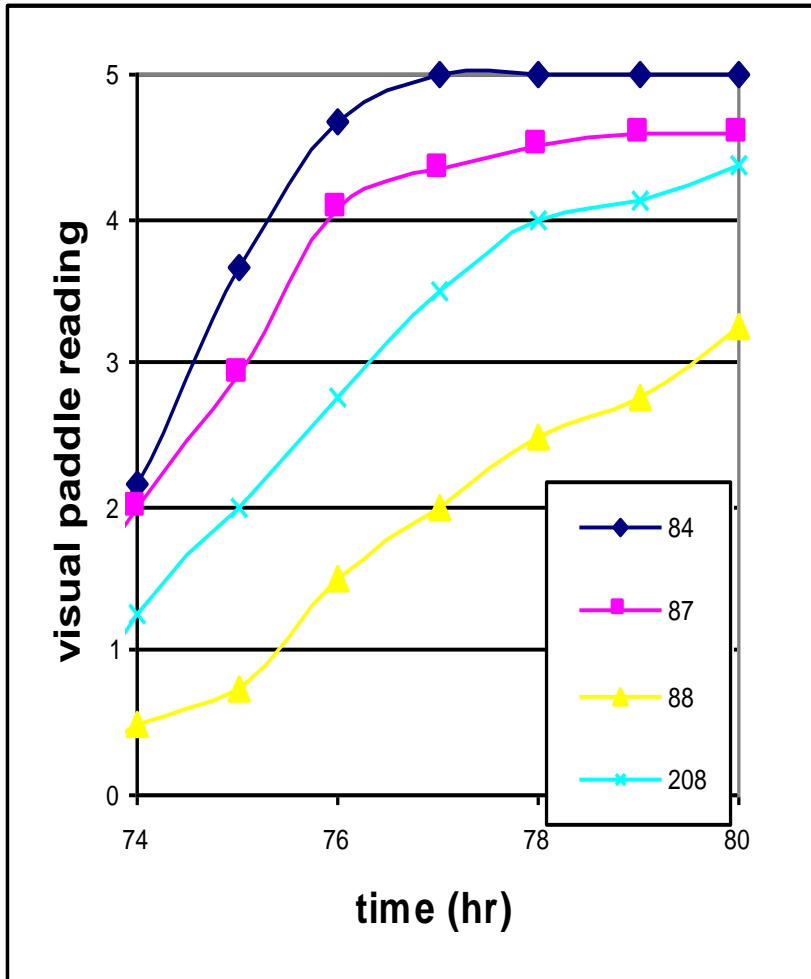
CO₂ Test Methods

- ⌘ Re-wetting (24 hr equilibration):
 - to 21% moisture
 - to 16% moisture
- ⌘ Place in 1 pint air-tight jars
- ⌘ Incubate at 23°C or 30°C
- ⌘ 47 & 72 hrs, remove lid for 1 hr
- ⌘ 48 & 72 hrs, insert indicator paddles, read hourly (color cards, DCR)
- ⌘ Final Moisture content
- ⌘ Dry remainder at 30°C for ergosterol & NIR

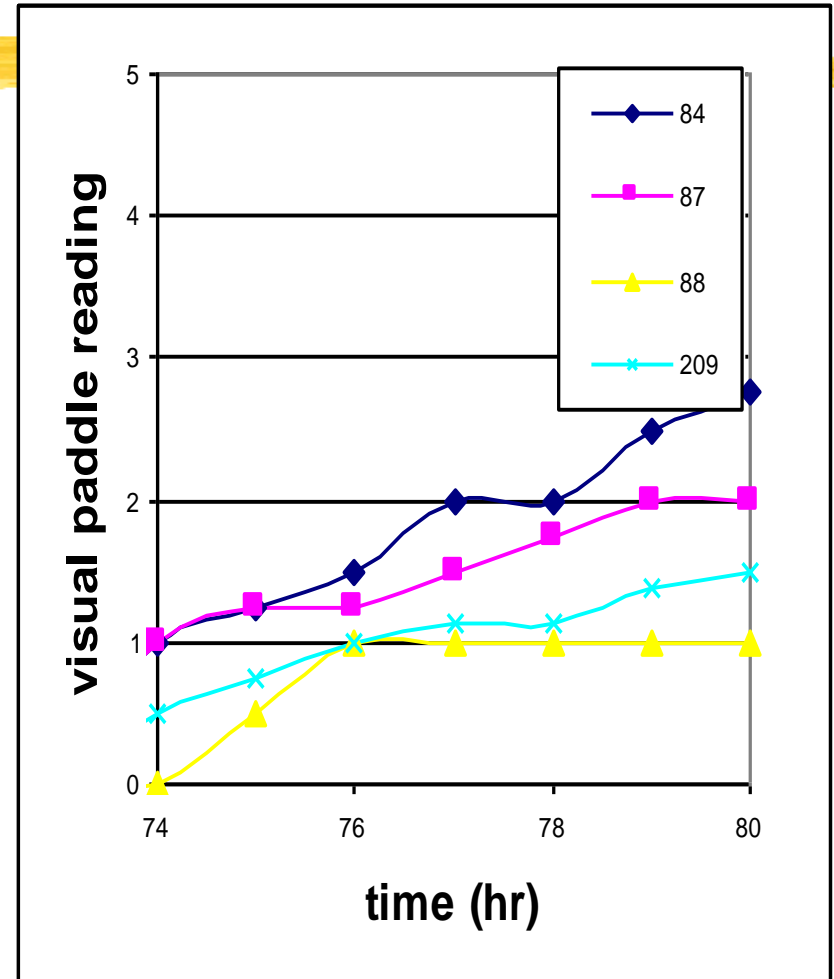


Source: Dr. Richard Stroshine, Purdue University

MC, Temperature effects: Paddle reading at 24°C, two m.c.'s



21% mc and 24°C



16% mc and 24°C

Resources

Some Extension websites from U.S. Land-Grant Universities:

- <http://extension.entm.purdue.edu/grainlab/>
- <http://www.extension.iastate.edu/Grain/>
- <http://www.oardc.ohio-state.edu/nc213/>
- <http://uarpp.uark.edu/personnel.htm>
- <http://entopl.okstate.edu/sprec/index.htm>

Acknowledgements

- Acknowledge USDA RAMP (2001-2003) and NC-213 (2001-2002) for support in the past studies conducted.
- Thanks to The Andersons LLC Delphi facility, in particular, Mr. Bob Marlow for their collaboration over the years in conducting the CO₂ early detection study.



Thank You!
Questions?

Klein E. Ileleji, Ph.D.
Associate Professor & Extension Engineer
Agricultural & Biological Engineering Department
Purdue University
225 S. University Street
West Lafayette, IN 47907-2093
Tel: 765-494-1198
Grain Post-Harvest Extension:
<http://extension.entm.purdue.edu/grainlab/index.php?page=home.php/>